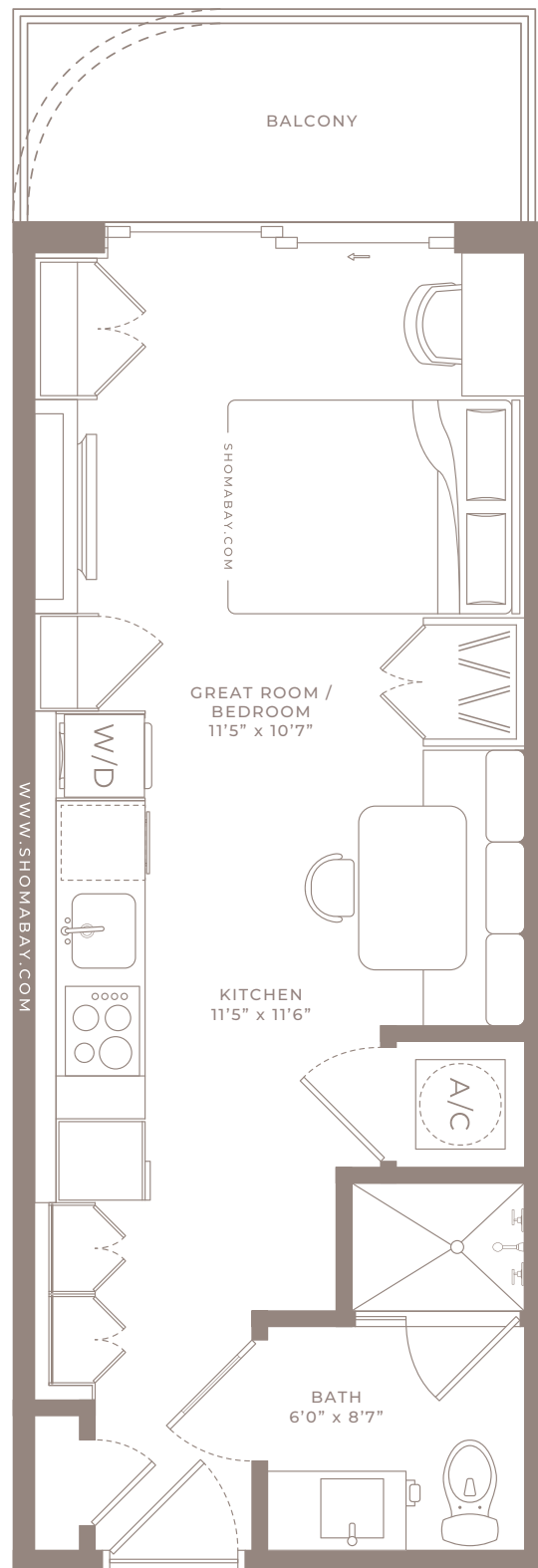




# SHOMA *bay*

FLOORPLANS

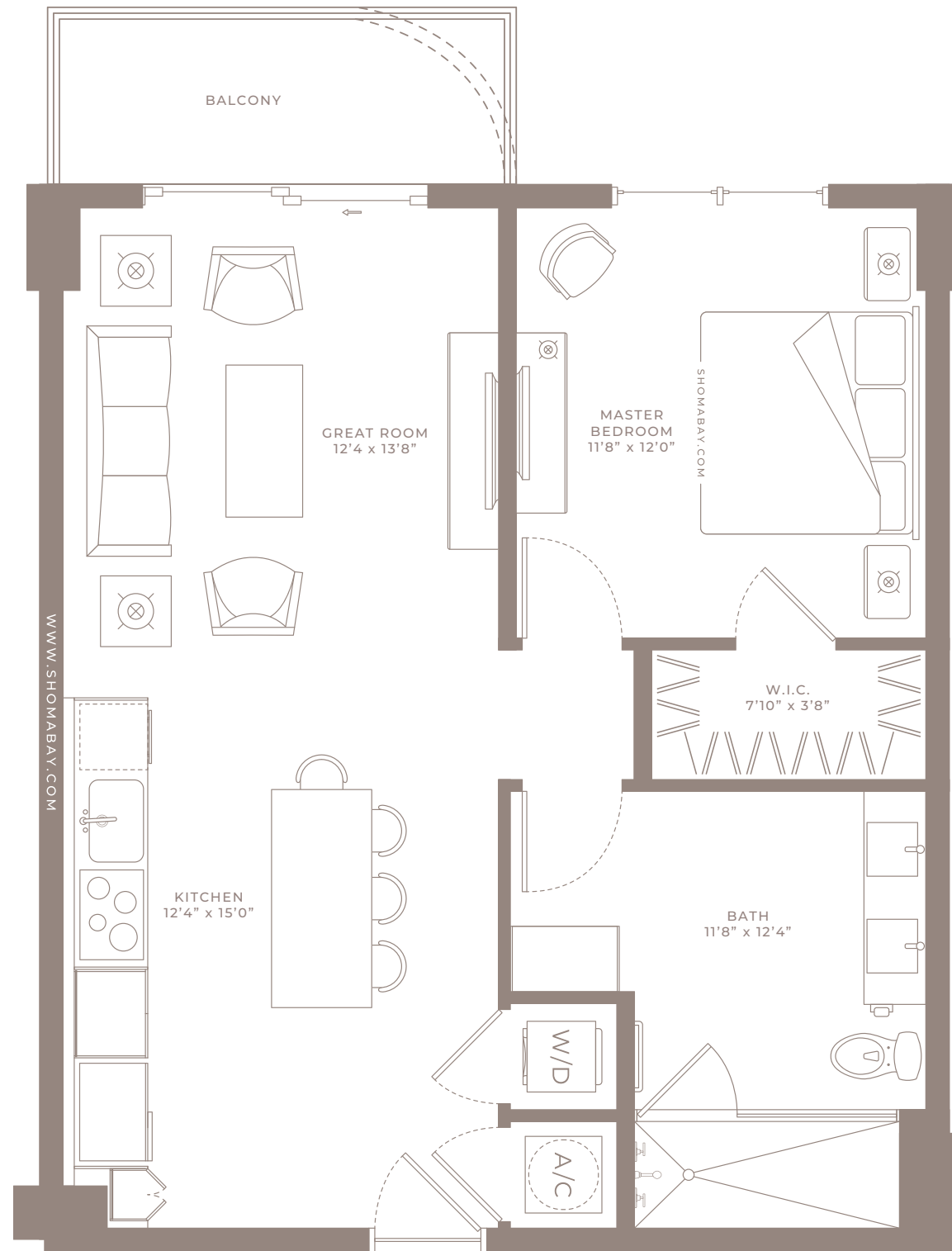


## STUDIO - Type S (0BED/1BTH)

Levels 2-14 and 16-24

Internal Area	376 SQ.FT (34.9 m2)
Outdoor Area	56 SQ.FT (5.2 m2)
Total Area	423 SQ.FT (39 m2)

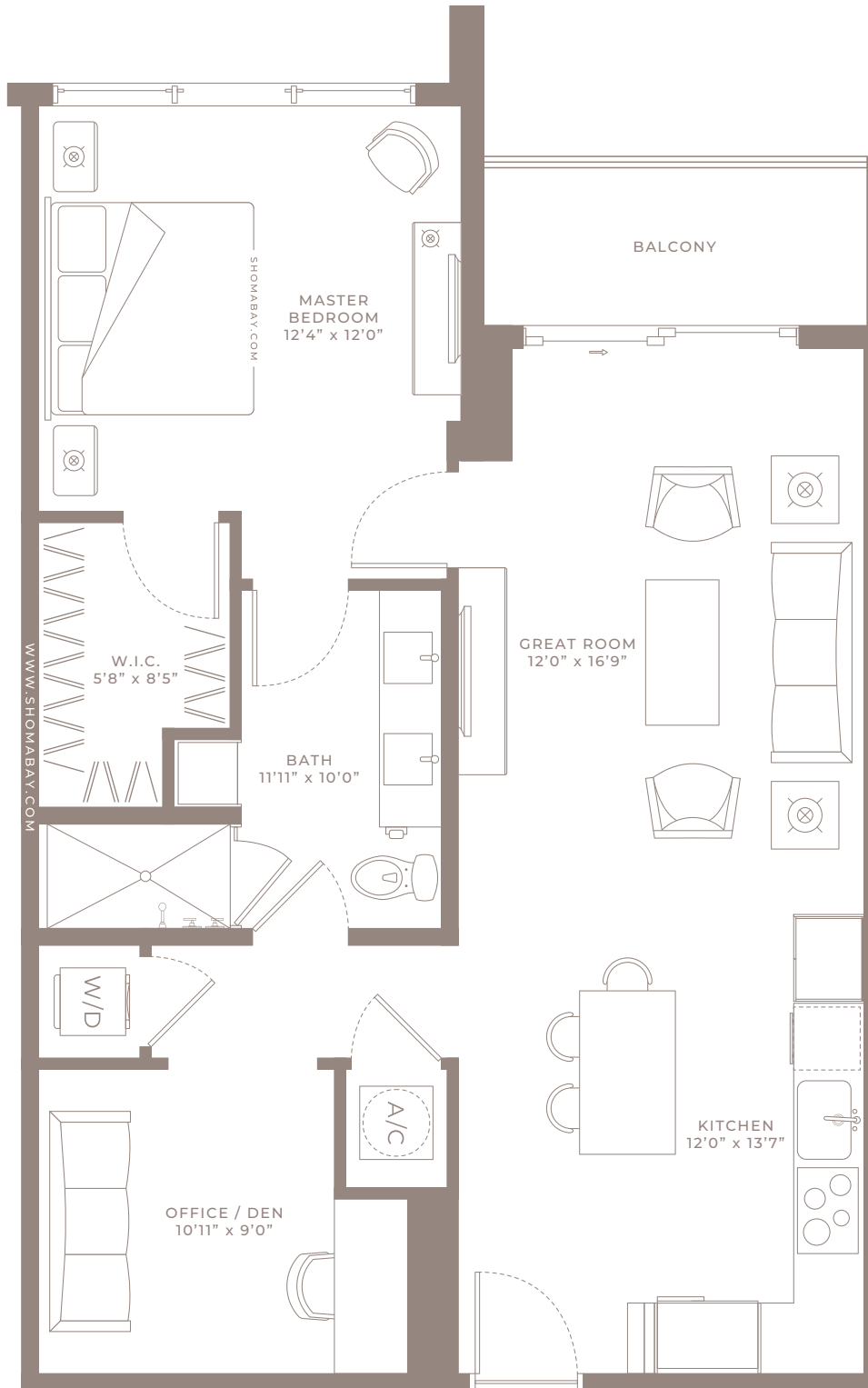
Any renderings and depictions are conceptual only and are for the convenience of reference. They should not be relied upon as representations, express or implied, of the final detail of the Units nor the views from any of the Units. ORAL REPRESENTATIONS CANNOT BE RELIED UPON AS CORRECTLY STATING REPRESENTATIONS OF THE DEVELOPER. FOR CORRECT REPRESENTATIONS, MAKE REFERENCE TO THIS BROCHURE AND TO THE DOCUMENTS REQUIRED BY 718.503, FLORIDA STATUTES, TO BE FURNISHED BY A DEVELOPER TO A BUYER OR LESSEE.



**Model A1 - Type A**  
(1BED/1BTH)  
Levels 2 to 24

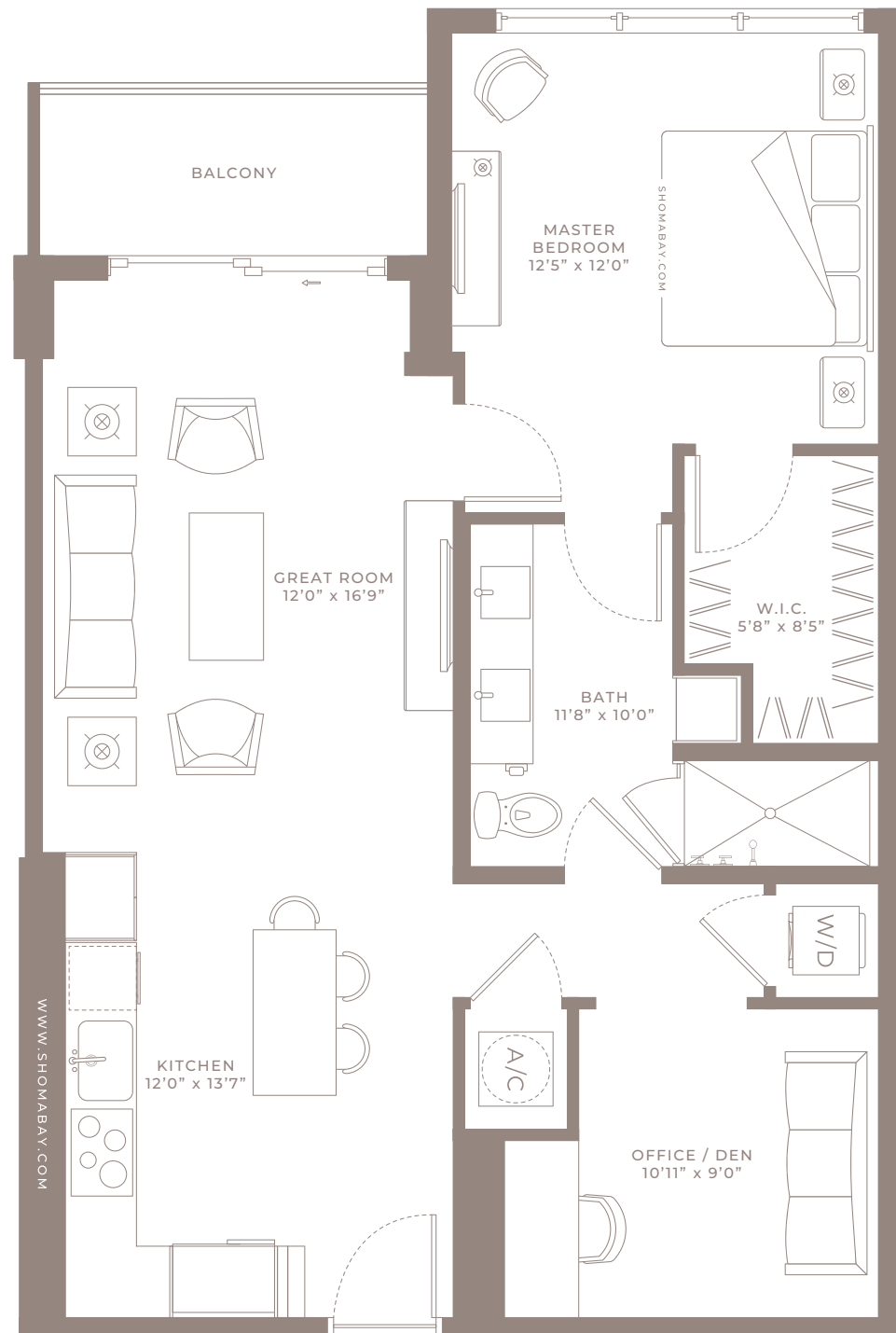
Internal Area	750 SQ.FT (69.7 m2)
Outdoor Area	60 SQ.FT (5.6 m2)
Total Area	810 SQ.FT (75.3 m2)

Any renderings and depictions are conceptual only and are for the convenience of reference. They should not be relied upon as representations, express or implied, of the final detail of the Units nor the views from any of the Units. ORAL REPRESENTATIONS CANNOT BE RELIED UPON AS CORRECTLY STATING REPRESENTATIONS OF THE DEVELOPER. FOR CORRECT REPRESENTATIONS, MAKE REFERENCE TO THIS BROCHURE AND TO THE DOCUMENTS REQUIRED BY 718.503, FLORIDA STATUTES, TO BE FURNISHED BY A DEVELOPER TO A BUYER OR LESSEE.



**MODEL A2 - Type A**  
(1BED/DEN/1BTH)  
Levels 2-14 and 16-24

Internal Area	881 SQ.FT (81.8 m2)
Outdoor Area	57 SQ.FT (5.3 m2)
Total Area	938 SQ.FT (87 m2)



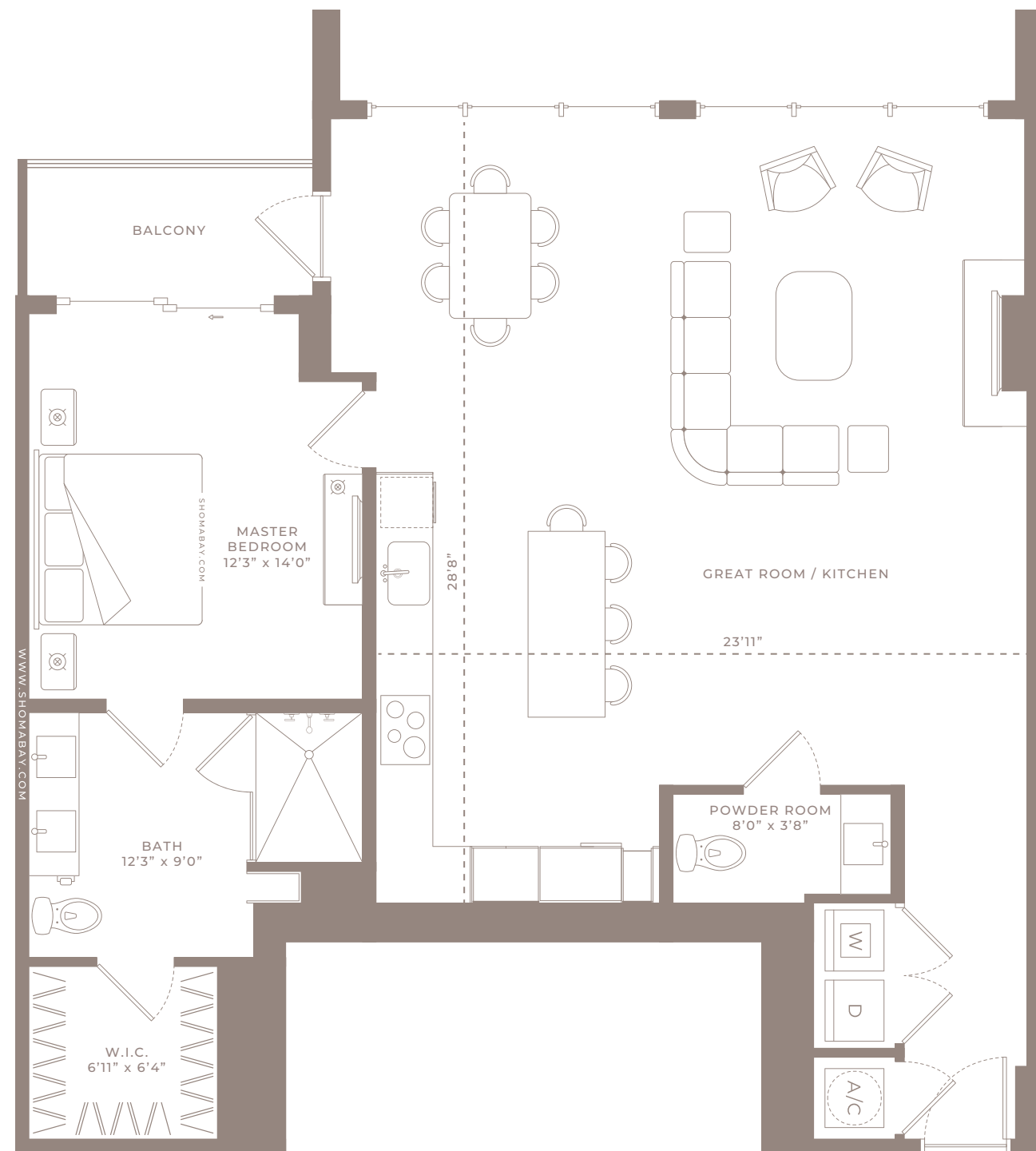
**MODEL A2.1 - Type A**  
(1BED/DEN/1BTH)  
Levels 2-14 and 16-24

Internal Area	881 SQ.FT (81.8 m <sup>2</sup> )
Outdoor Area	57 SQ.FT (5.3 m <sup>2</sup> )
Total Area	938 SQ.FT (87 m <sup>2</sup> )



Any renderings and depictions are conceptual only and are for the convenience of reference. They should not be relied upon as representations, express or implied, of the final detail of the Units nor the views from any of the Units. ORAL REPRESENTATIONS CANNOT BE RELIED UPON AS CORRECTLY STATING REPRESENTATIONS OF THE DEVELOPER. FOR CORRECT REPRESENTATIONS, MAKE REFERENCE TO THIS BROCHURE AND TO THE DOCUMENTS REQUIRED BY 718.503, FLORIDA STATUTES, TO BE FURNISHED BY A DEVELOPER TO A BUYER OR LESSEE.



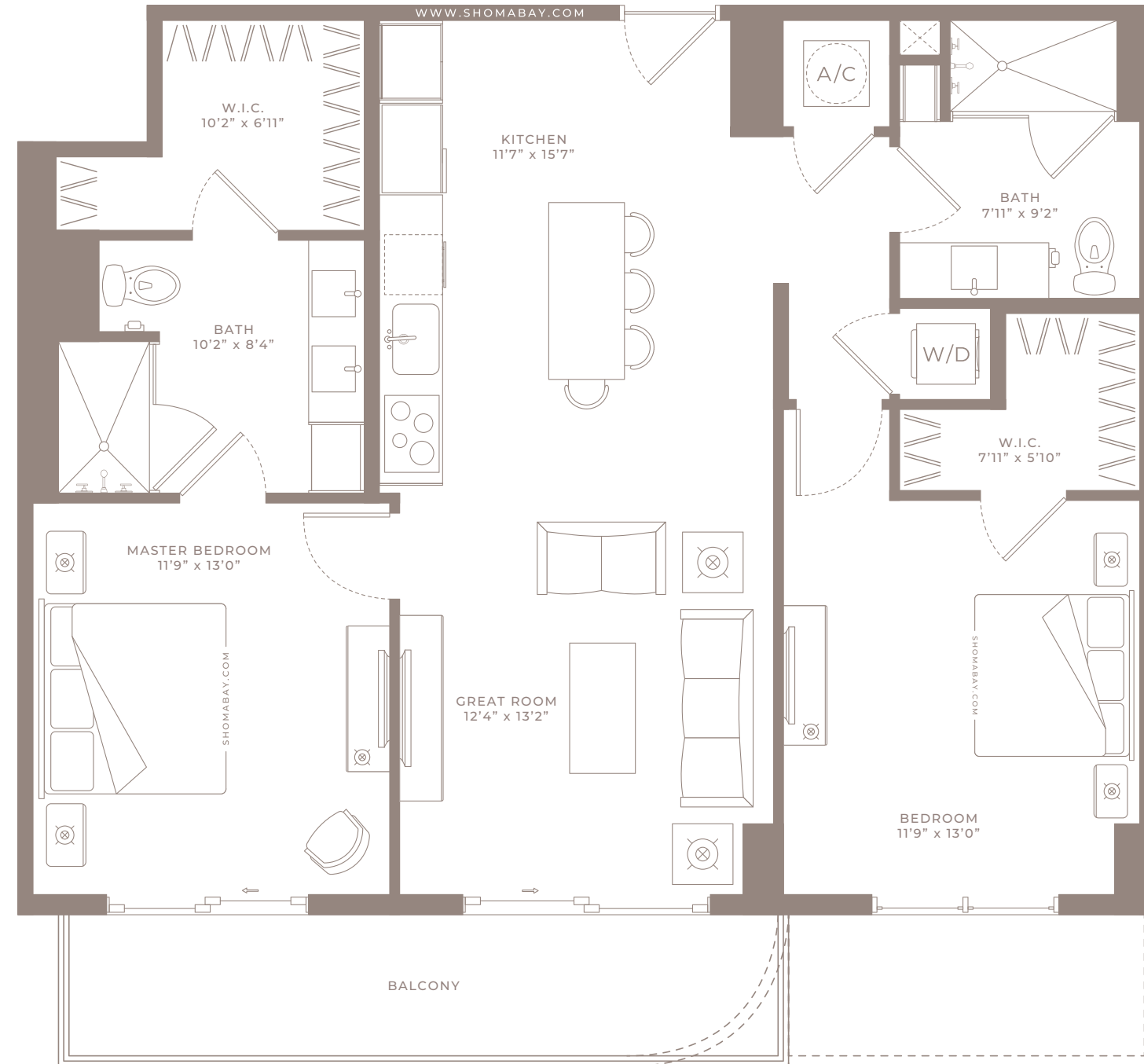


**MODEL A3 - Type A**  
(1BED/1.5BTH)  
Levels 2-14 and 16-24

Internal Area	1,184 SQ.FT (109.9 m <sup>2</sup> )
Outdoor Area	53 SQ.FT (4.9 m <sup>2</sup> )
Total Area	1,237 SQ.FT (115 m <sup>2</sup> )

Any renderings and depictions are conceptual only and are for the convenience of reference. They should not be relied upon as representations, express or implied, of the final detail of the Units nor the views from any of the Units. ORAL REPRESENTATIONS CANNOT BE RELIED UPON AS CORRECTLY STATING REPRESENTATIONS OF THE DEVELOPER. FOR CORRECT REPRESENTATIONS, MAKE REFERENCE TO THIS BROCHURE AND TO THE DOCUMENTS REQUIRED BY 718.503, FLORIDA STATUTES, TO BE FURNISHED BY A DEVELOPER TO A BUYER OR LESSEE.





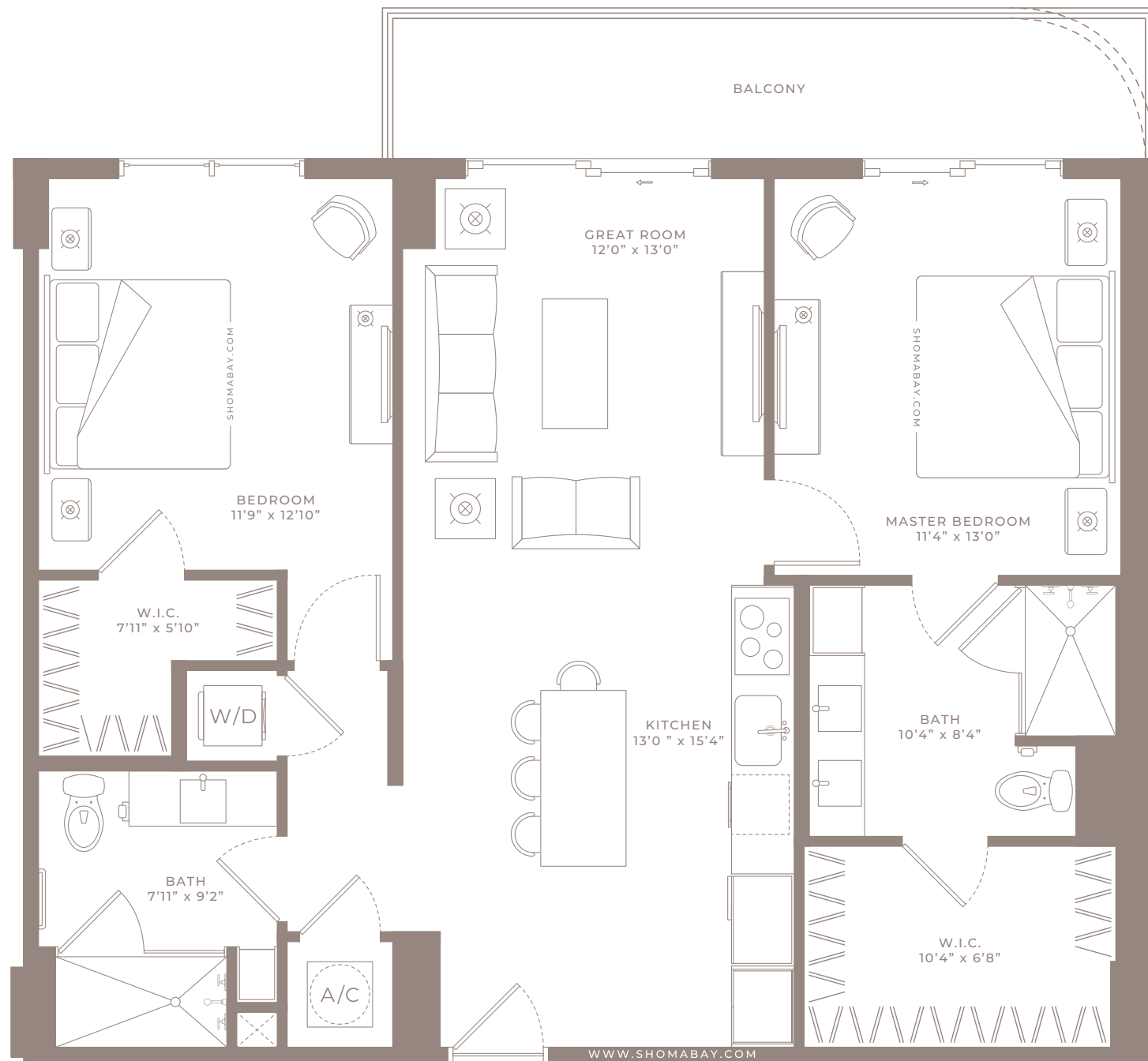
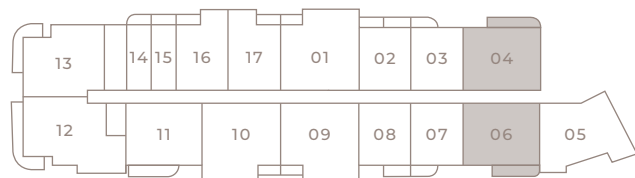
**MODEL B1 - Type B**  
**(2BED/2BTH)**  
Levels 2 to 24

Internal Area	1,085 SQ.FT (100.8 m <sup>2</sup> )
Outdoor Area	115 SQ.FT (10.7 m <sup>2</sup> )
Total Area	1,200 SQ.FT (111 m <sup>2</sup> )



Any renderings and depictions are conceptual only and are for the convenience of reference. They should not be relied upon as representations, express or implied, of the final detail of the Units nor the views from any of the Units. ORAL REPRESENTATIONS CANNOT BE RELIED UPON AS CORRECTLY STATING REPRESENTATIONS OF THE DEVELOPER. FOR CORRECT REPRESENTATIONS, MAKE REFERENCE TO THIS BROCHURE AND TO THE DOCUMENTS REQUIRED BY 718.503, FLORIDA STATUTES, TO BE FURNISHED BY A DEVELOPER TO A BUYER OR LESSEE.



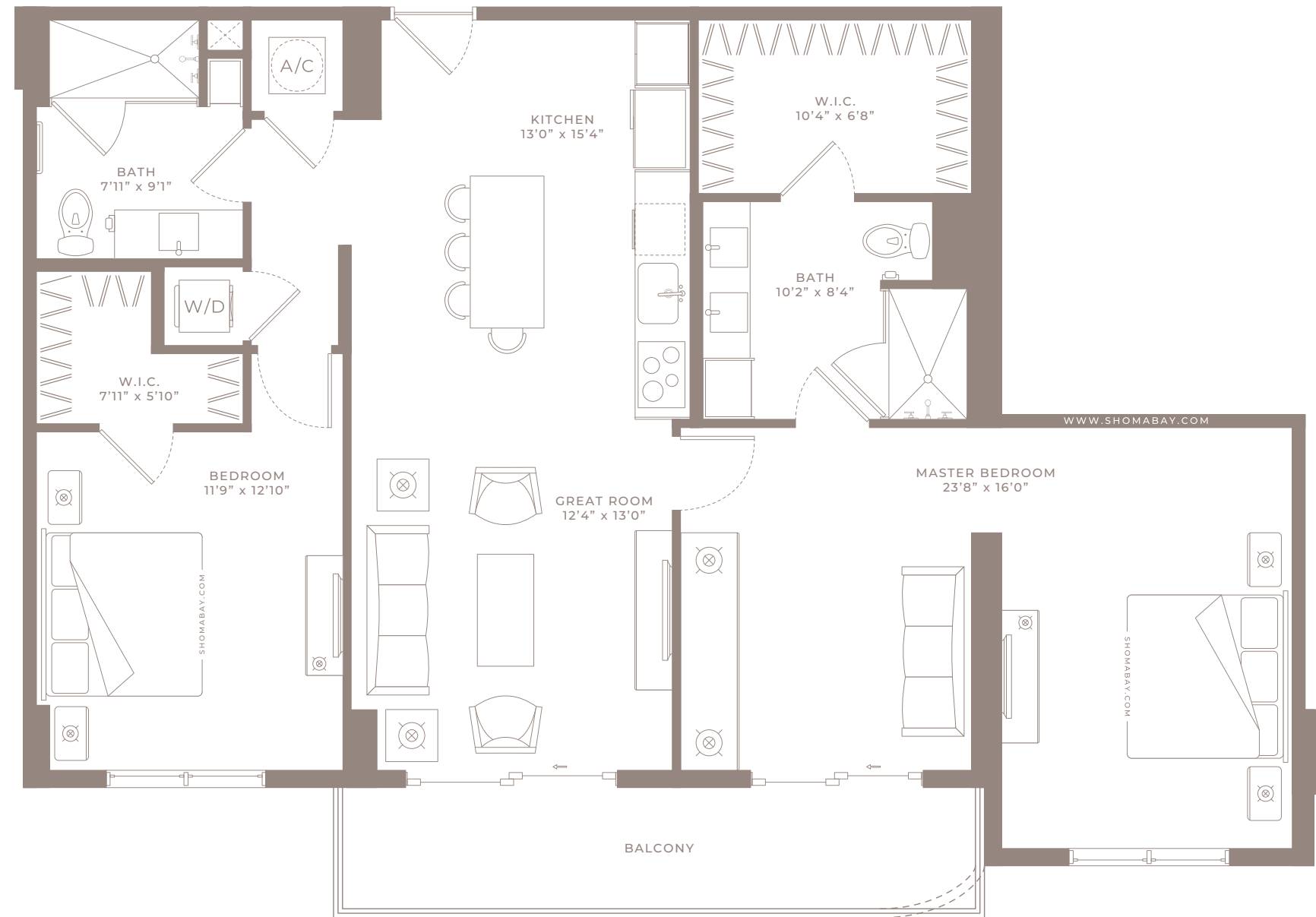


**MODEL B1A - Type B**  
(2BED/2BTH)  
Levels 2 to 24

Internal Area	1,093 SQ.FT (101.5 m <sup>2</sup> )
Outdoor Area	123 SQ.FT (11.4 m <sup>2</sup> )
Total Area	1,216 SQ.FT (113 m <sup>2</sup> )

Any renderings and depictions are conceptual only and are for the convenience of reference. They should not be relied upon as representations, express or implied, of the final detail of the Units nor the views from any of the Units. ORAL REPRESENTATIONS CANNOT BE RELIED UPON AS CORRECTLY STATING REPRESENTATIONS OF THE DEVELOPER. FOR CORRECT REPRESENTATIONS, MAKE REFERENCE TO THIS BROCHURE AND TO THE DOCUMENTS REQUIRED BY 718.503, FLORIDA STATUTES, TO BE FURNISHED BY A DEVELOPER TO A BUYER OR LESSEE.





**MODEL B1A.2 - Type B**  
(2BED/2BTH)  
Level 12

Internal Area	1,304 SQ.FT (121.1 m <sup>2</sup> )
Outdoor Area	123 SQ.FT (11.4 m <sup>2</sup> )
Total Area	1,427 SQ.FT (132.5 m <sup>2</sup> )



Any renderings and depictions are conceptual only and are for the convenience of reference. They should not be relied upon as representations, express or implied, of the final detail of the Units nor the views from any of the Units. ORAL REPRESENTATIONS CANNOT BE RELIED UPON AS CORRECTLY STATING REPRESENTATIONS OF THE DEVELOPER. FOR CORRECT REPRESENTATIONS, MAKE REFERENCE TO THIS BROCHURE AND TO THE DOCUMENTS REQUIRED BY 718.503, FLORIDA STATUTES, TO BE FURNISHED BY A DEVELOPER TO A BUYER OR LESSEE.





**MODEL B2 - Type B**  
(2BED/2BTH)  
Levels 2 to 24

Internal Area	1,183 SQ.FT (109.9 m <sup>2</sup> )
Outdoor Area	54 SQ.FT (5 m <sup>2</sup> )
Total Area	1,237 SQ.FT (115 m <sup>2</sup> )

Any renderings and depictions are conceptual only and are for the convenience of reference. They should not be relied upon as representations, express or implied, of the final detail of the Units nor the views from any of the Units. ORAL REPRESENTATIONS CANNOT BE RELIED UPON AS CORRECTLY STATING REPRESENTATIONS OF THE DEVELOPER. FOR CORRECT REPRESENTATIONS, MAKE REFERENCE TO THIS BROCHURE AND TO THE DOCUMENTS REQUIRED BY 718.503, FLORIDA STATUTES, TO BE FURNISHED BY A DEVELOPER TO A BUYER OR LESSEE.





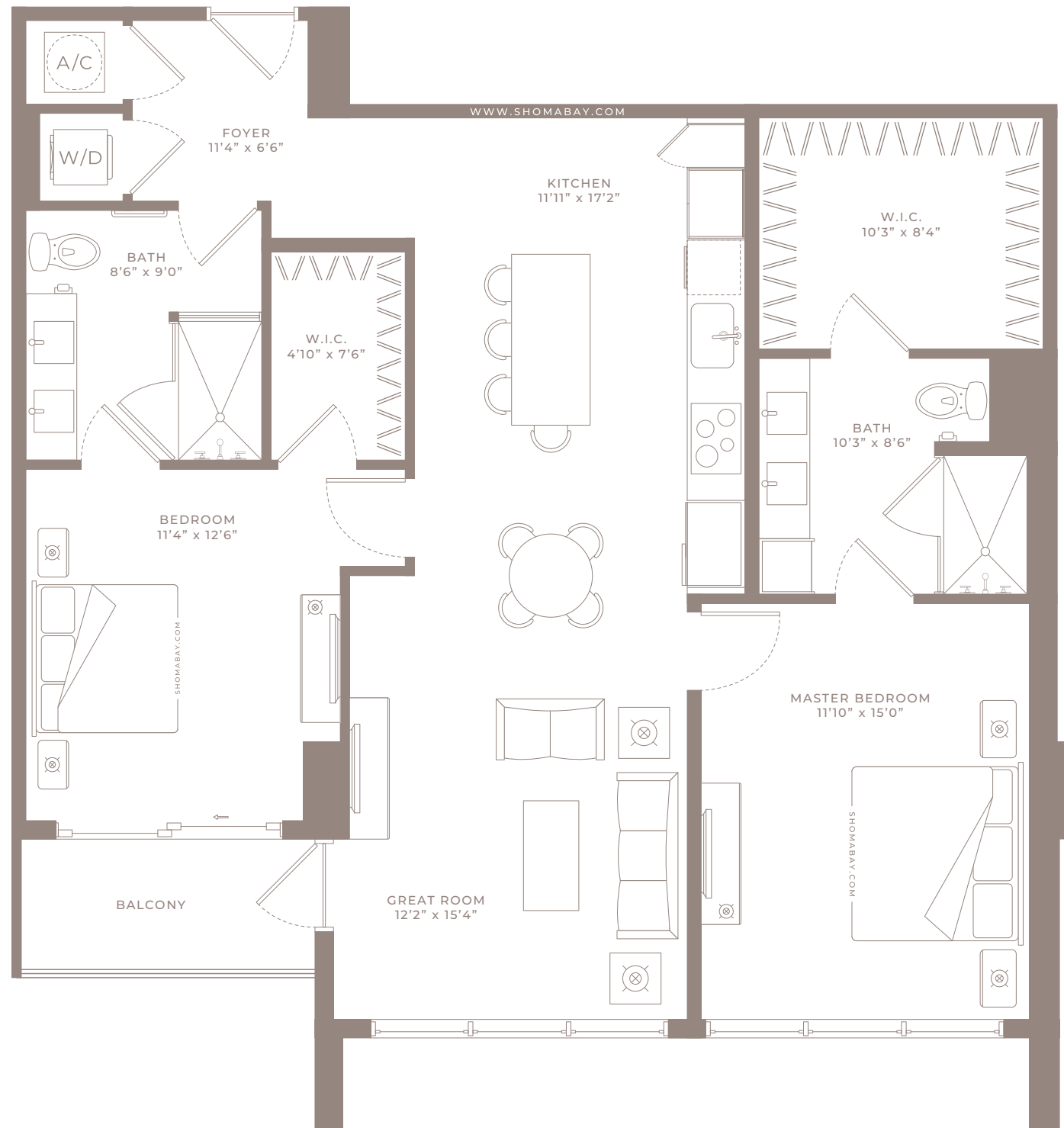
**MODEL B3 - Type B**  
(2BED/2BTH)  
Levels 2 to 10

Internal Area	1,201 SQ.FT (111.6 m <sup>2</sup> )
Outdoor Area	109 SQ.FT (10.1 m <sup>2</sup> )
Total Area	1,310 SQ.FT (121.7 m <sup>2</sup> )



Any renderings and depictions are conceptual only and are for the convenience of reference. They should not be relied upon as representations, express or implied, of the final detail of the Units nor the views from any of the Units. ORAL REPRESENTATIONS CANNOT BE RELIED UPON AS CORRECTLY STATING REPRESENTATIONS OF THE DEVELOPER. FOR CORRECT REPRESENTATIONS, MAKE REFERENCE TO THIS BROCHURE AND TO THE DOCUMENTS REQUIRED BY 718.503, FLORIDA STATUTES, TO BE FURNISHED BY A DEVELOPER TO A BUYER OR LESSEE.

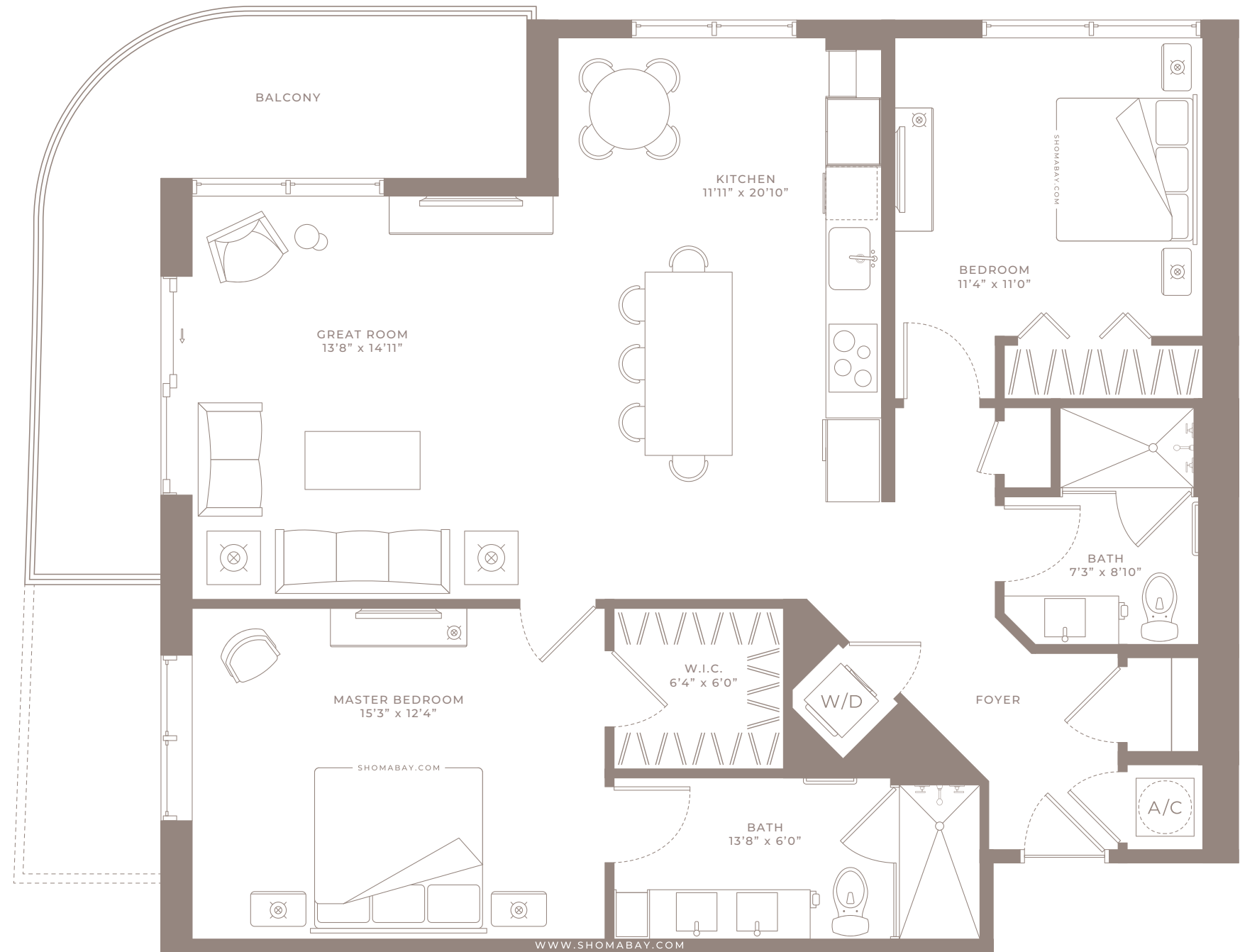




**MODEL B4 - Type B**  
(2BED/2BTH)  
Levels 2 to 24

Internal Area	1,214 SQ.FT (112.8 m <sup>2</sup> )
Outdoor Area	54 SQ.FT (5 m <sup>2</sup> )
Total Area	1,268 SQ.FT (118 m <sup>2</sup> )

Any renderings and depictions are conceptual only and are for the convenience of reference. They should not be relied upon as representations, express or implied, of the final detail of the Units nor the views from any of the Units. ORAL REPRESENTATIONS CANNOT BE RELIED UPON AS CORRECTLY STATING REPRESENTATIONS OF THE DEVELOPER. FOR CORRECT REPRESENTATIONS, MAKE REFERENCE TO THIS BROCHURE AND TO THE DOCUMENTS REQUIRED BY 718.503, FLORIDA STATUTES, TO BE FURNISHED BY A DEVELOPER TO A BUYER OR LESSEE.



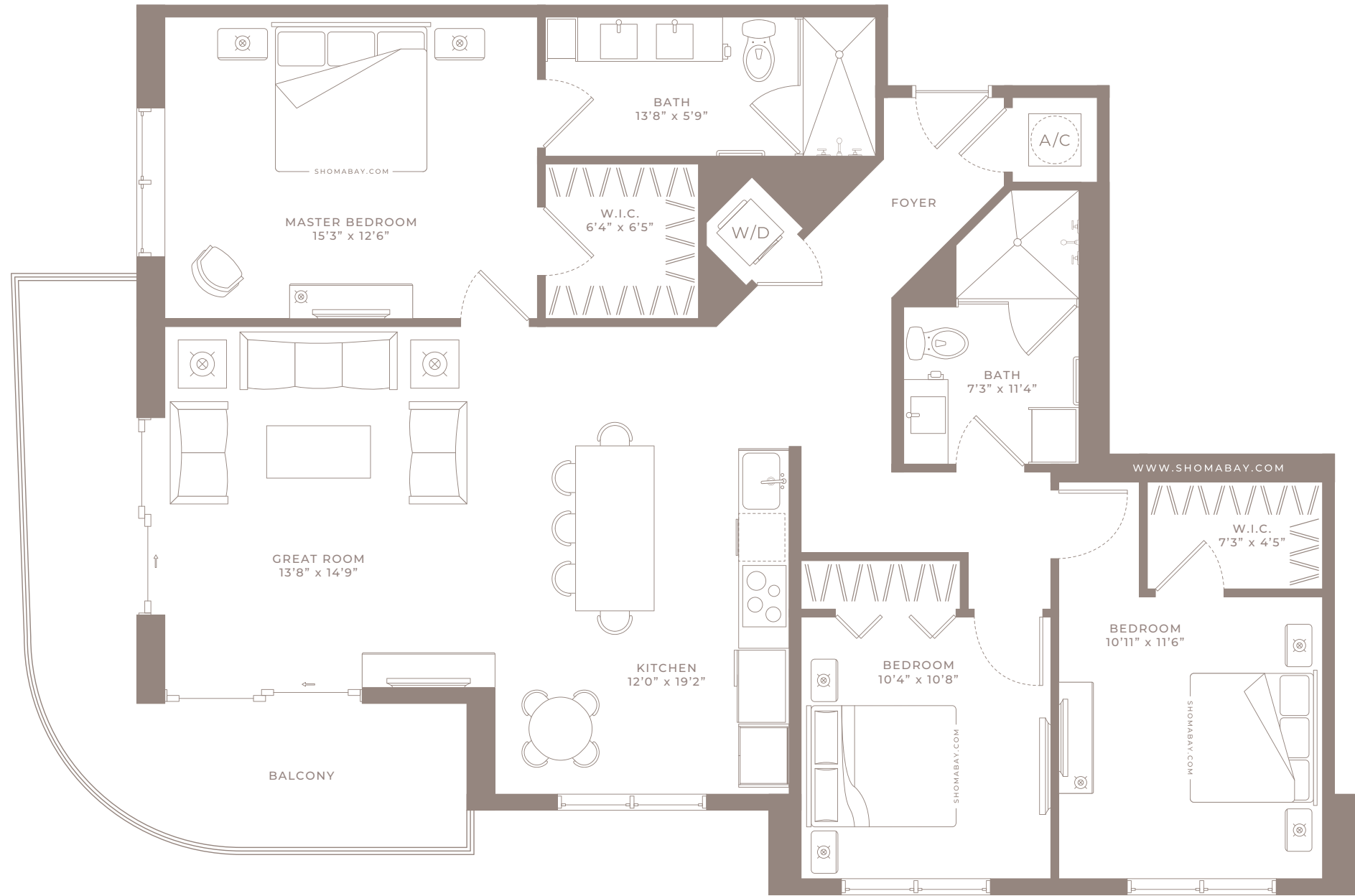
**MODEL B5 - Type B**  
(2BED/2BTH)  
Levels 2 to 24

Internal Area	1,253 SQ.FT (116.4 m <sup>2</sup> )
Outdoor Area	236 SQ.FT (21.9 m <sup>2</sup> )
Total Area	1,489 SQ.FT (139m <sup>2</sup> )



Any renderings and depictions are conceptual only and are for the convenience of reference. They should not be relied upon as representations, express or implied, of the final detail of the Units nor the views from any of the Units. ORAL REPRESENTATIONS CANNOT BE RELIED UPON AS CORRECTLY STATING REPRESENTATIONS OF THE DEVELOPER. FOR CORRECT REPRESENTATIONS, MAKE REFERENCE TO THIS BROCHURE AND TO THE DOCUMENTS REQUIRED BY 718.503, FLORIDA STATUTES, TO BE FURNISHED BY A DEVELOPER TO A BUYER OR LESSEE.





**MODEL C1 - Type C**  
**(3BED/2BTH)**  
Levels 2 to 24

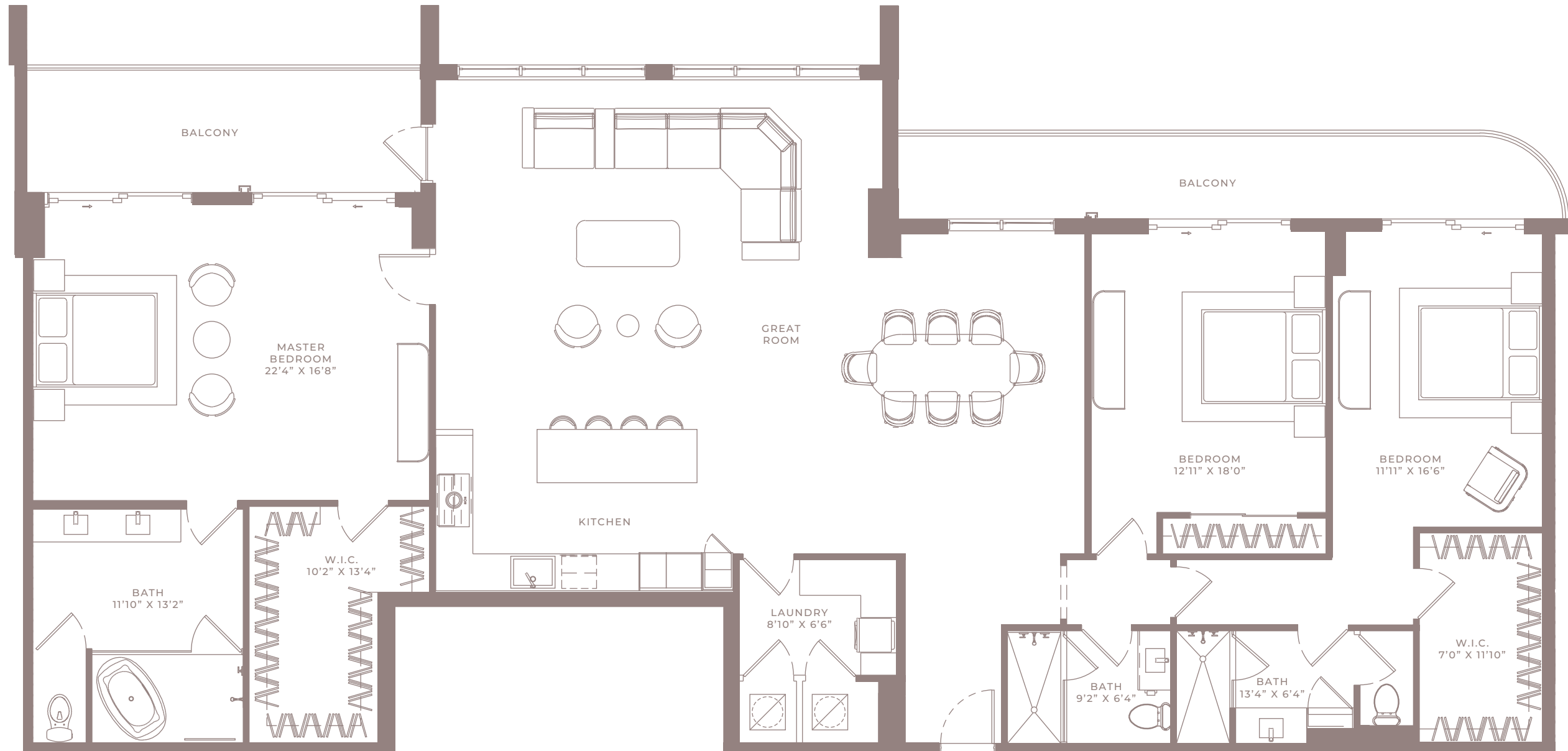
Internal Area	1,443 SQ.FT (134 m <sup>2</sup> )
Outdoor Area	205 SQ.FT (19 m <sup>2</sup> )
Total Area	1,648 SQ.FT (153 m <sup>2</sup> )



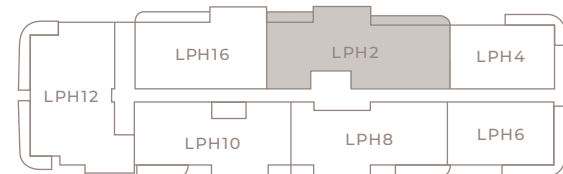
Any renderings and depictions are conceptual only and are for the convenience of reference. They should not be relied upon as representations, express or implied, of the final detail of the Units nor the views from any of the Units. ORAL REPRESENTATIONS CANNOT BE RELIED UPON AS CORRECTLY STATING REPRESENTATIONS OF THE DEVELOPER. FOR CORRECT REPRESENTATIONS, MAKE REFERENCE TO THIS BROCHURE AND TO THE DOCUMENTS REQUIRED BY 718.503, FLORIDA STATUTES, TO BE FURNISHED BY A DEVELOPER TO A BUYER OR LESSEE.







**MODEL LPH2 - Type PH**  
(3BED/3BTH)  
Levels 25 to 26

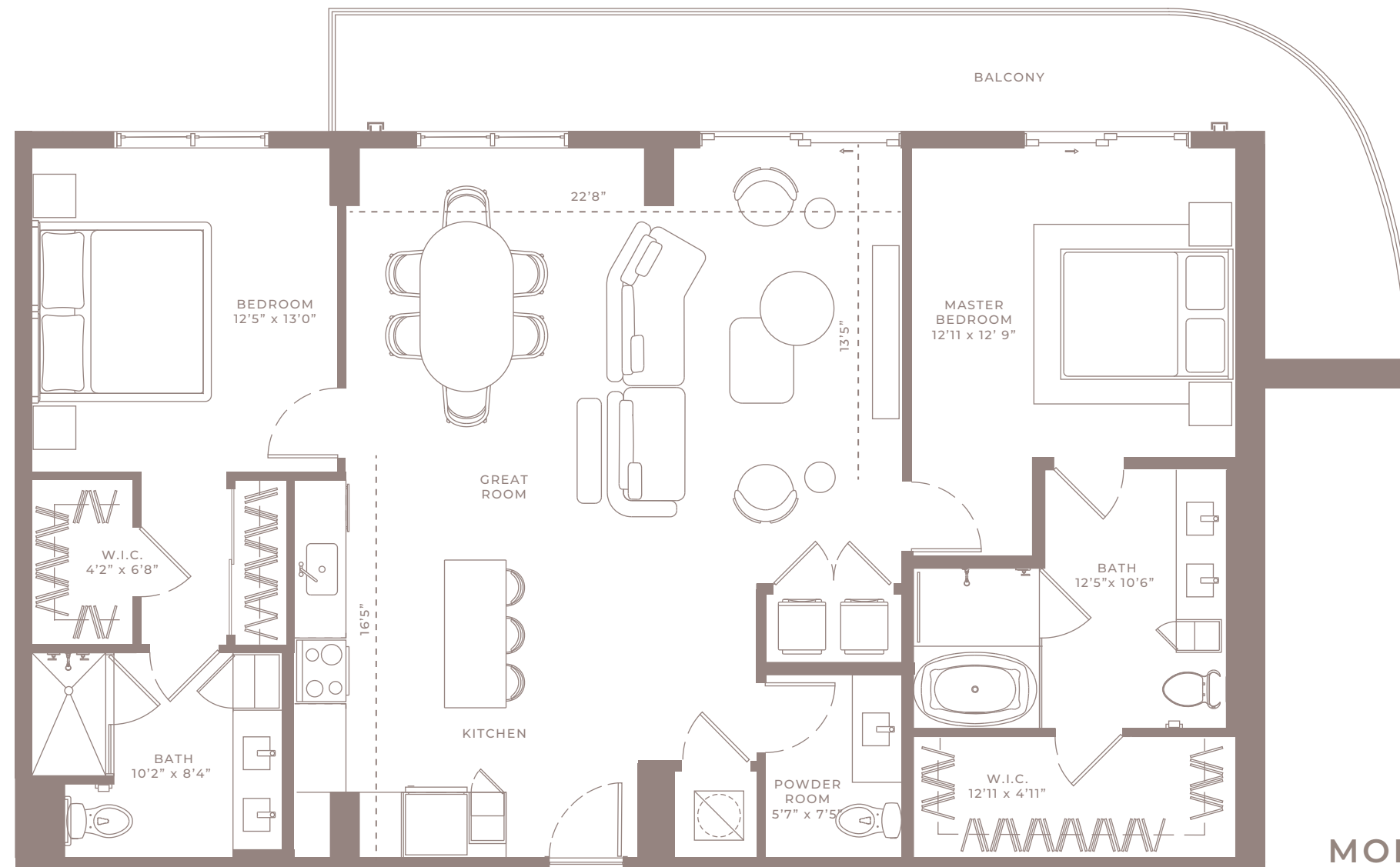


Internal Area	2,659 SQ.FT (247m <sup>2</sup> )
Outdoor Area	342 SQ.FT (32m <sup>2</sup> )
Total Area	3001 SQ.FT (279m <sup>2</sup> )

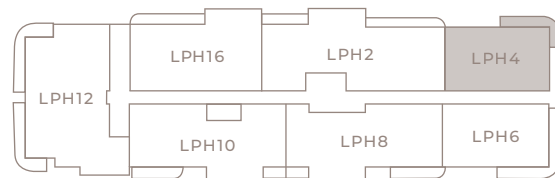


Any renderings and depictions are conceptual only and are for the convenience of reference. They should not be relied upon as representations, express or implied, of the final detail of the Units nor the views from any of the Units. ORAL REPRESENTATIONS CANNOT BE RELIED UPON AS CORRECTLY STATING REPRESENTATIONS OF THE DEVELOPER. FOR CORRECT REPRESENTATIONS, MAKE REFERENCE TO THIS BROCHURE AND TO THE DOCUMENTS REQUIRED BY 718.503, FLORIDA STATUTES, TO BE FURNISHED BY A DEVELOPER TO A BUYER OR LESSEE.





**MODEL LPH4 - Type PH**  
(2BED/2.5BTH)  
Levels 25 to 26

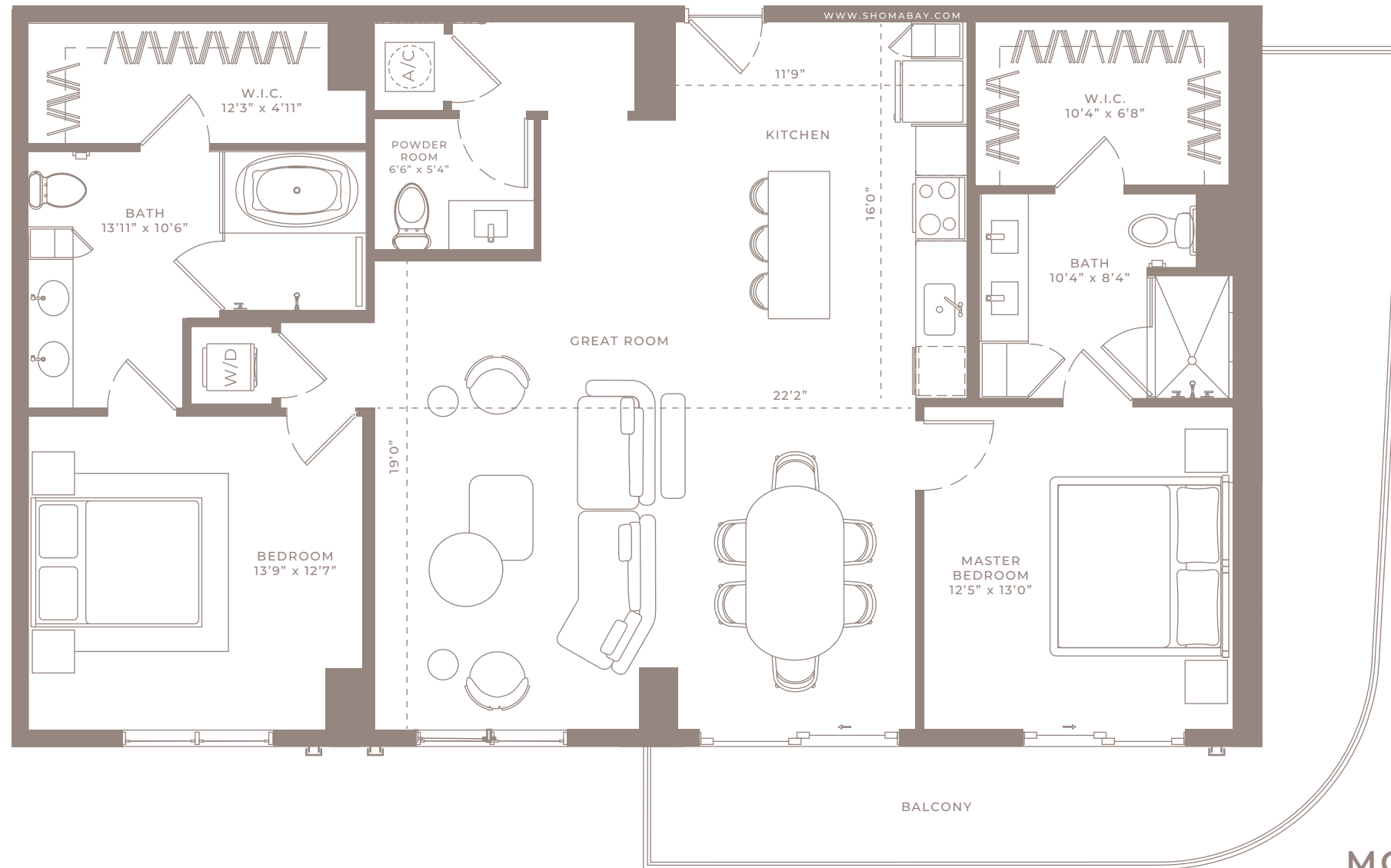


Internal Area	1,493 SQ.FT (139m <sup>2</sup> )
Outdoor Area	248 SQ.FT (23m <sup>2</sup> )
Total Area	1,741 SQ.FT (162m <sup>2</sup> )

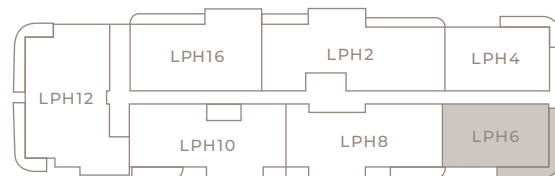


Any renderings and depictions are conceptual only and are for the convenience of reference. They should not be relied upon as representations, express or implied, of the final detail of the Units nor the views from any of the Units. ORAL REPRESENTATIONS CANNOT BE RELIED UPON AS CORRECTLY STATING REPRESENTATIONS OF THE DEVELOPER. FOR CORRECT REPRESENTATIONS, MAKE REFERENCE TO THIS BROCHURE AND TO THE DOCUMENTS REQUIRED BY 718.503, FLORIDA STATUTES, TO BE FURNISHED BY A DEVELOPER TO A BUYER OR LESSEE.





**MODEL LPH6 - Type PH**  
(2BED/2.5BTH)  
Levels 25 to 26

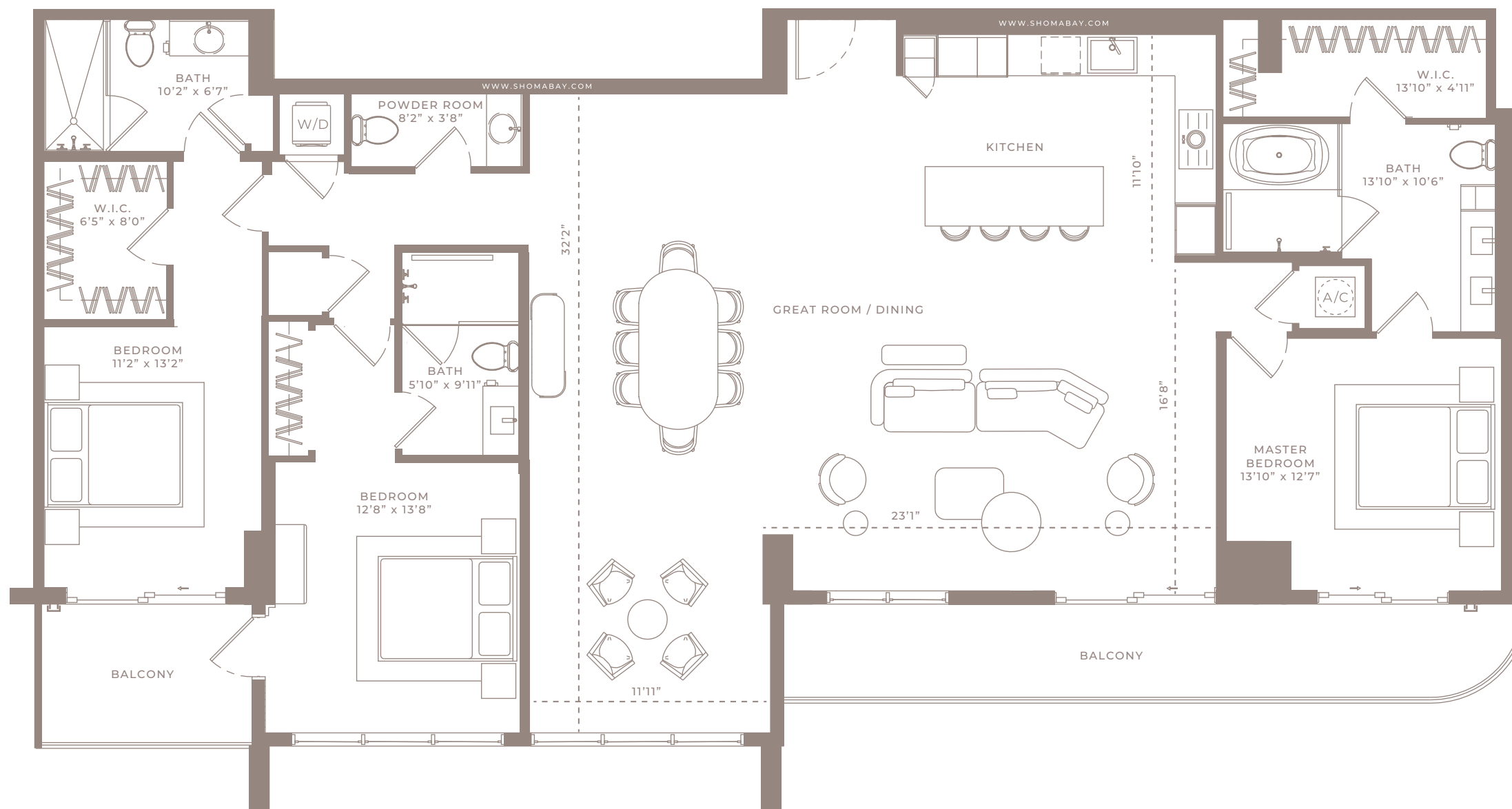


Internal Area	1,518 SQ.FT (141 m <sup>2</sup> )
Outdoor Area	348 SQ.FT (32 m <sup>2</sup> )
Total Area	1866 SQ.FT (173 m <sup>2</sup> )



Any renderings and depictions are conceptual only and are for the convenience of reference. They should not be relied upon as representations, express or implied, of the final detail of the Units nor the views from any of the Units. ORAL REPRESENTATIONS CANNOT BE RELIED UPON AS CORRECTLY STATING REPRESENTATIONS OF THE DEVELOPER. FOR CORRECT REPRESENTATIONS, MAKE REFERENCE TO THIS BROCHURE AND TO THE DOCUMENTS REQUIRED BY 718.503, FLORIDA STATUTES, TO BE FURNISHED BY A DEVELOPER TO A BUYER OR LESSEE.





## MODEL LPH8 - Type PH (3BED/3.5BTH)

Levels 25 to 26

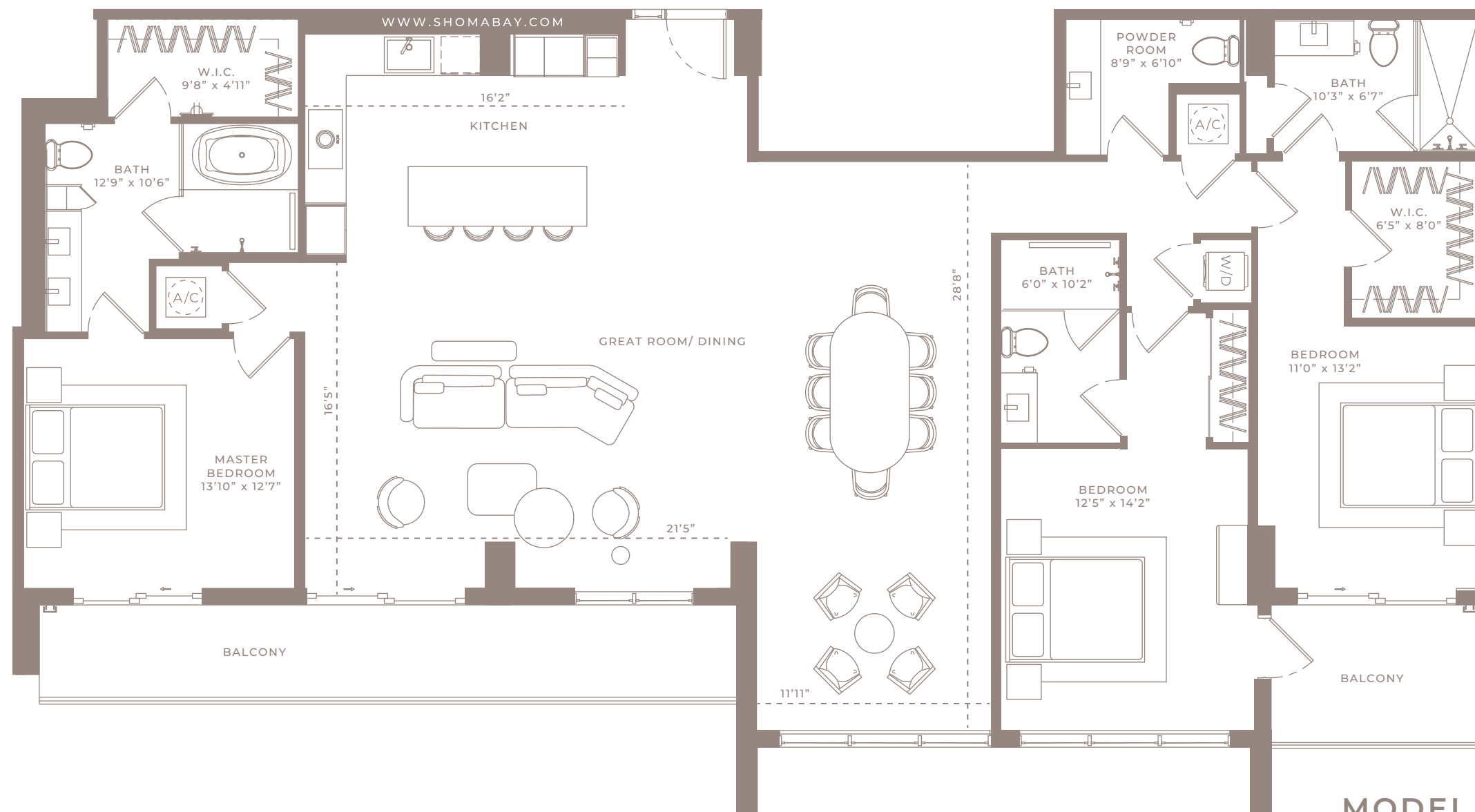


Internal Area	2,299 SQ.FT (214 m²)
Outdoor Area	260 SQ.FT (24 m²)
Total Area	2559 SQ.FT (238 m²)



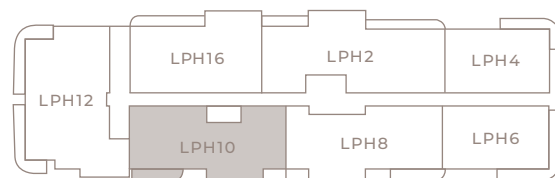
Any renderings and depictions are conceptual only and are for the convenience of reference. They should not be relied upon as representations, express or implied, of the final detail of the Units nor the views from any of the Units. ORAL REPRESENTATIONS CANNOT BE RELIED UPON AS CORRECTLY STATING REPRESENTATIONS OF THE DEVELOPER. FOR CORRECT REPRESENTATIONS, MAKE REFERENCE TO THIS BROCHURE AND TO THE DOCUMENTS REQUIRED BY 718.503, FLORIDA STATUTES, TO BE FURNISHED BY A DEVELOPER TO A BUYER OR LESSEE.





## MODEL LPH10 - Type PH (3BED/3.5BTH)

Levels 25 to 26

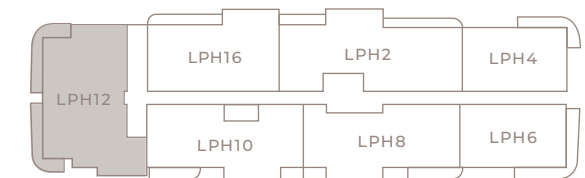
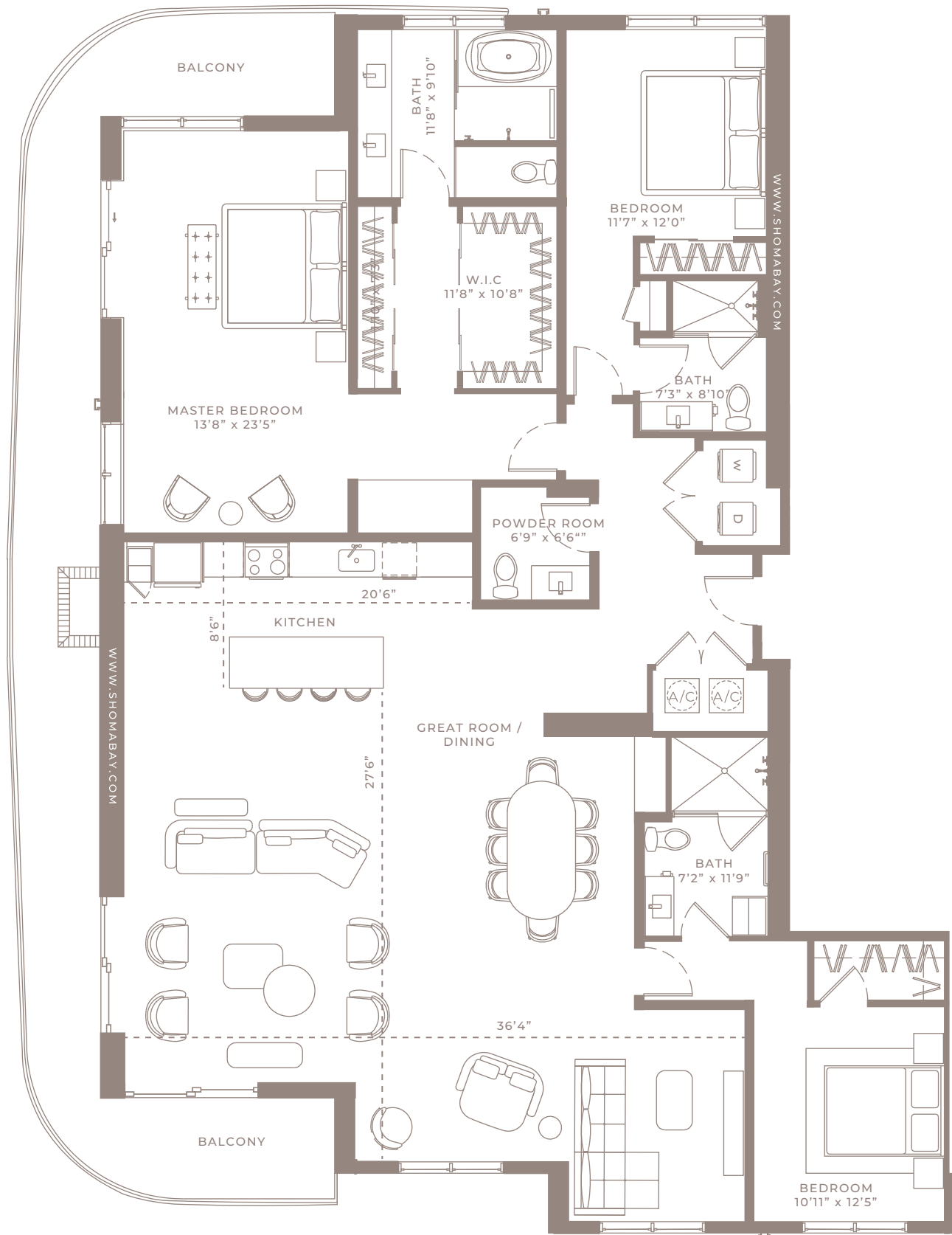


Internal Area	2,269 SQ.FT (211 m <sup>2</sup> )
Outdoor Area	253 SQ.FT (24 m <sup>2</sup> )
Total Area	2522 SQ.FT (234 m <sup>2</sup> )



Any renderings and depictions are conceptual only and are for the convenience of reference. They should not be relied upon as representations, express or implied, of the final detail of the Units nor the views from any of the Units. ORAL REPRESENTATIONS CANNOT BE RELIED UPON AS CORRECTLY STATING REPRESENTATIONS OF THE DEVELOPER. FOR CORRECT REPRESENTATIONS, MAKE REFERENCE TO THIS BROCHURE AND TO THE DOCUMENTS REQUIRED BY 718.503, FLORIDA STATUTES, TO BE FURNISHED BY A DEVELOPER TO A BUYER OR LESSEE.





**MODEL LPH12 - Type PH**  
(3BED/3.5BTH)  
Levels 25 to 26

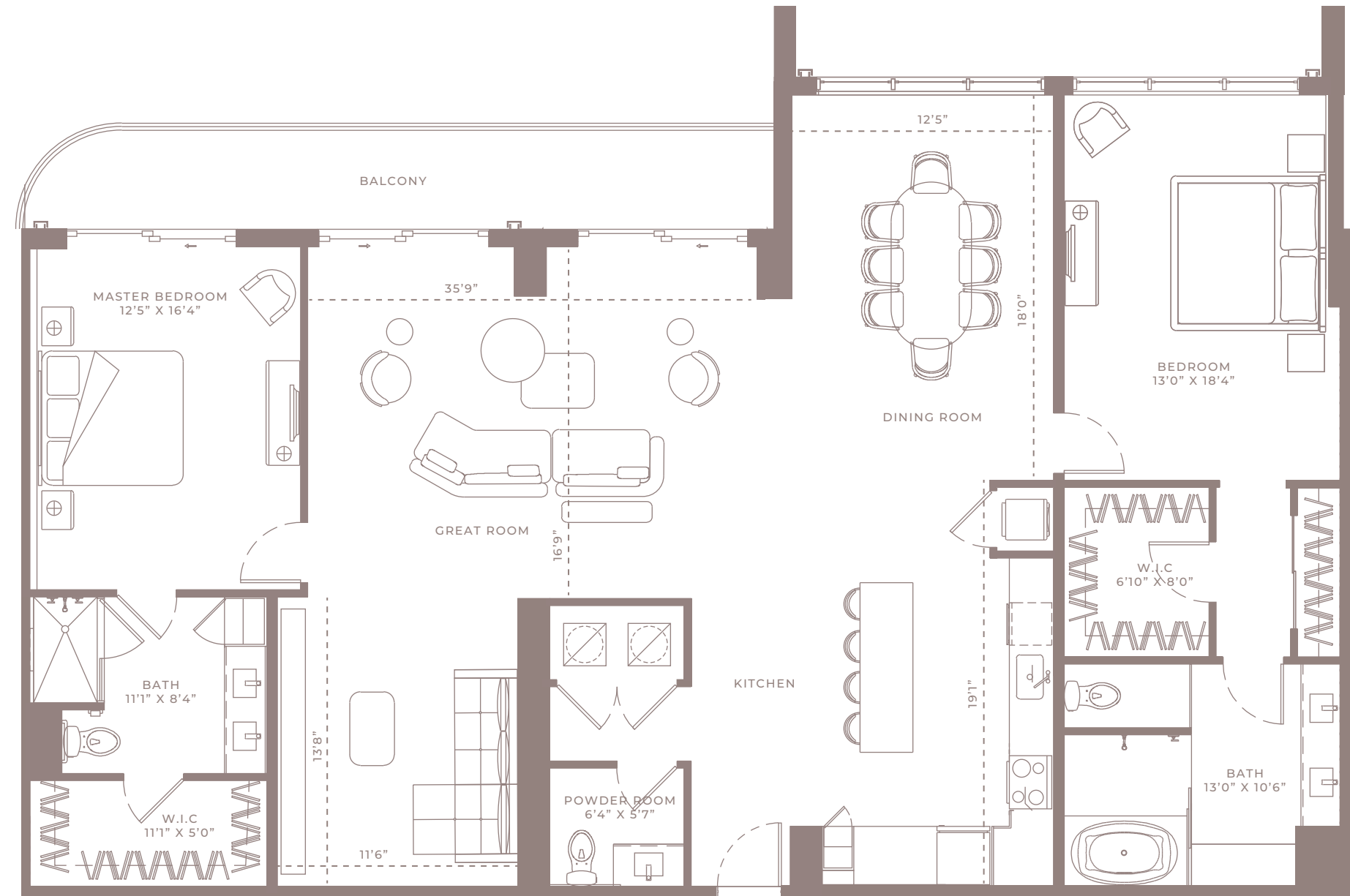
Internal Area	2,751 SQ.FT (256 m <sup>2</sup> )
Outdoor Area	478 SQ.FT (44 m <sup>2</sup> )
Total Area	3229 SQ.FT (300 m <sup>2</sup> )



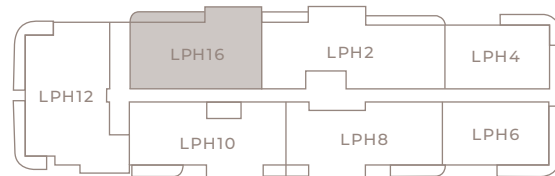
Any renderings and depictions are conceptual only and are for the convenience of reference. They should not be relied upon as representations, express or implied, of the final detail of the Units nor the views from any of the Units. ORAL REPRESENTATIONS CANNOT BE RELIED UPON AS CORRECTLY STATING REPRESENTATIONS OF THE DEVELOPER. FOR CORRECT REPRESENTATIONS, MAKE REFERENCE TO THIS BROCHURE AND TO THE DOCUMENTS REQUIRED BY 718.503, FLORIDA STATUTES, TO BE FURNISHED BY A DEVELOPER TO A BUYER OR LESSEE.







**MODEL LPH16 - Type PH**  
(2BED/2.5BTH)  
Levels 25 to 26

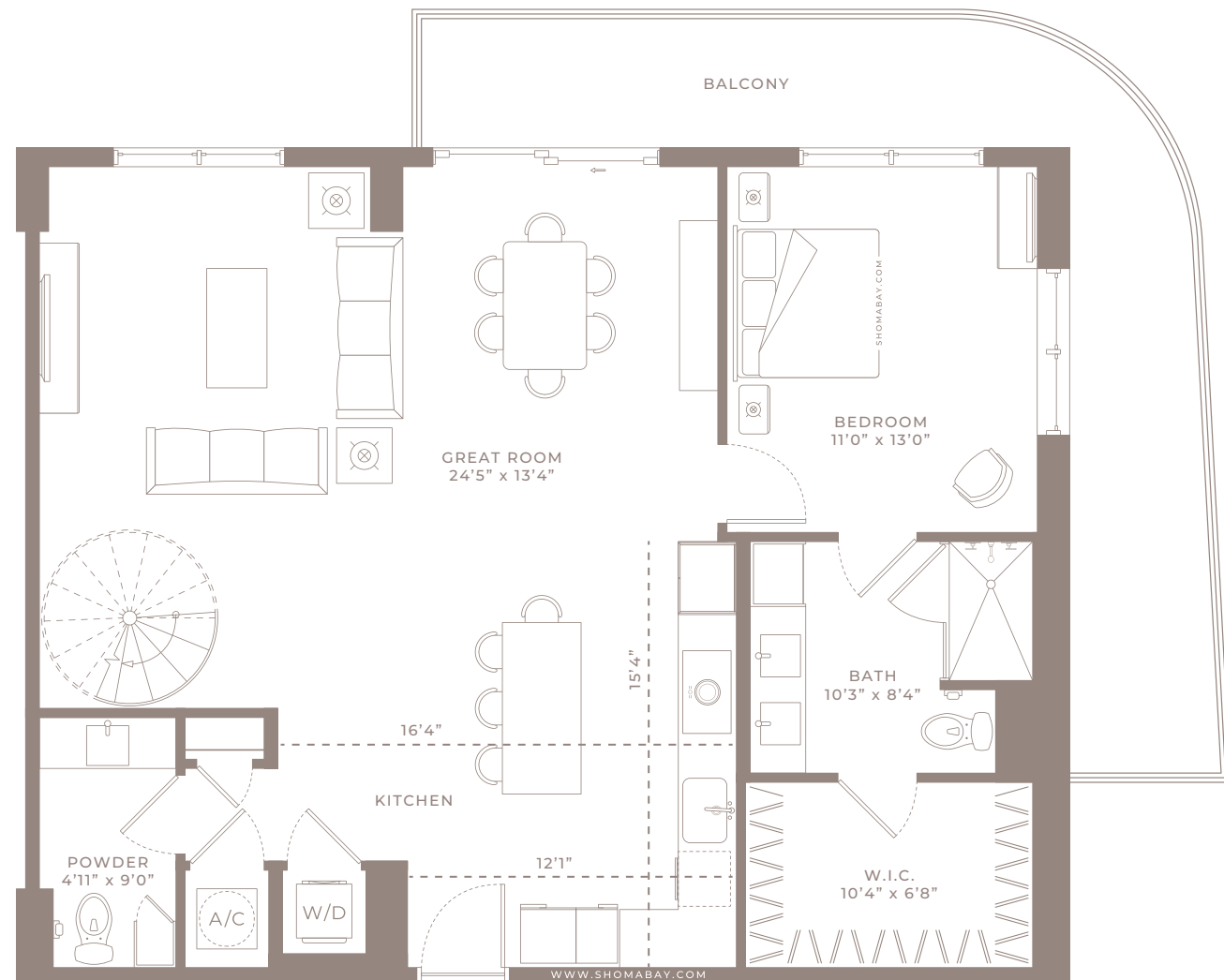


Internal Area	2,156 SQ.FT (200 m <sup>2</sup> )
Outdoor Area	173 SQ.FT (16m <sup>2</sup> )
Total Area	2329 SQ.FT (216m <sup>2</sup> )

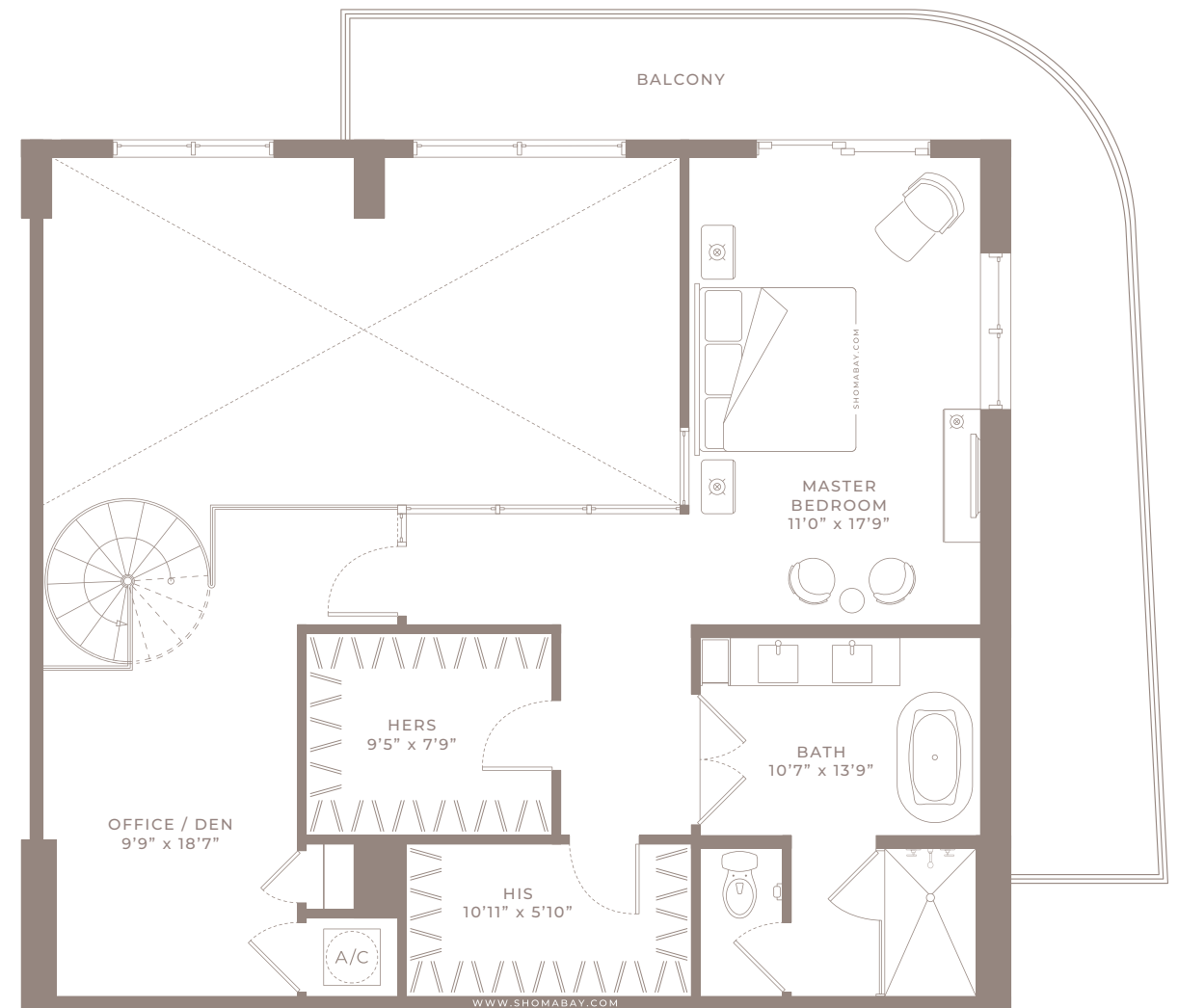


Any renderings and depictions are conceptual only and are for the convenience of reference. They should not be relied upon as representations, express or implied, of the final detail of the Units nor the views from any of the Units. ORAL REPRESENTATIONS CANNOT BE RELIED UPON AS CORRECTLY STATING REPRESENTATIONS OF THE DEVELOPER. FOR CORRECT REPRESENTATIONS, MAKE REFERENCE TO THIS BROCHURE AND TO THE DOCUMENTS REQUIRED BY 718.503, FLORIDA STATUTES, TO BE FURNISHED BY A DEVELOPER TO A BUYER OR LESSEE.





LEVEL 1



LEVEL 2

**MODEL P1 - Type PH**  
(2BED/DEN/2.5BTH)  
Level 27

Internal Area	1,979 SQ.FT (183.9 m <sup>2</sup> )
Outdoor Area	528 SQ.FT (49.1 m <sup>2</sup> )
Total Area	2507 SQ.FT (233 m <sup>2</sup> )



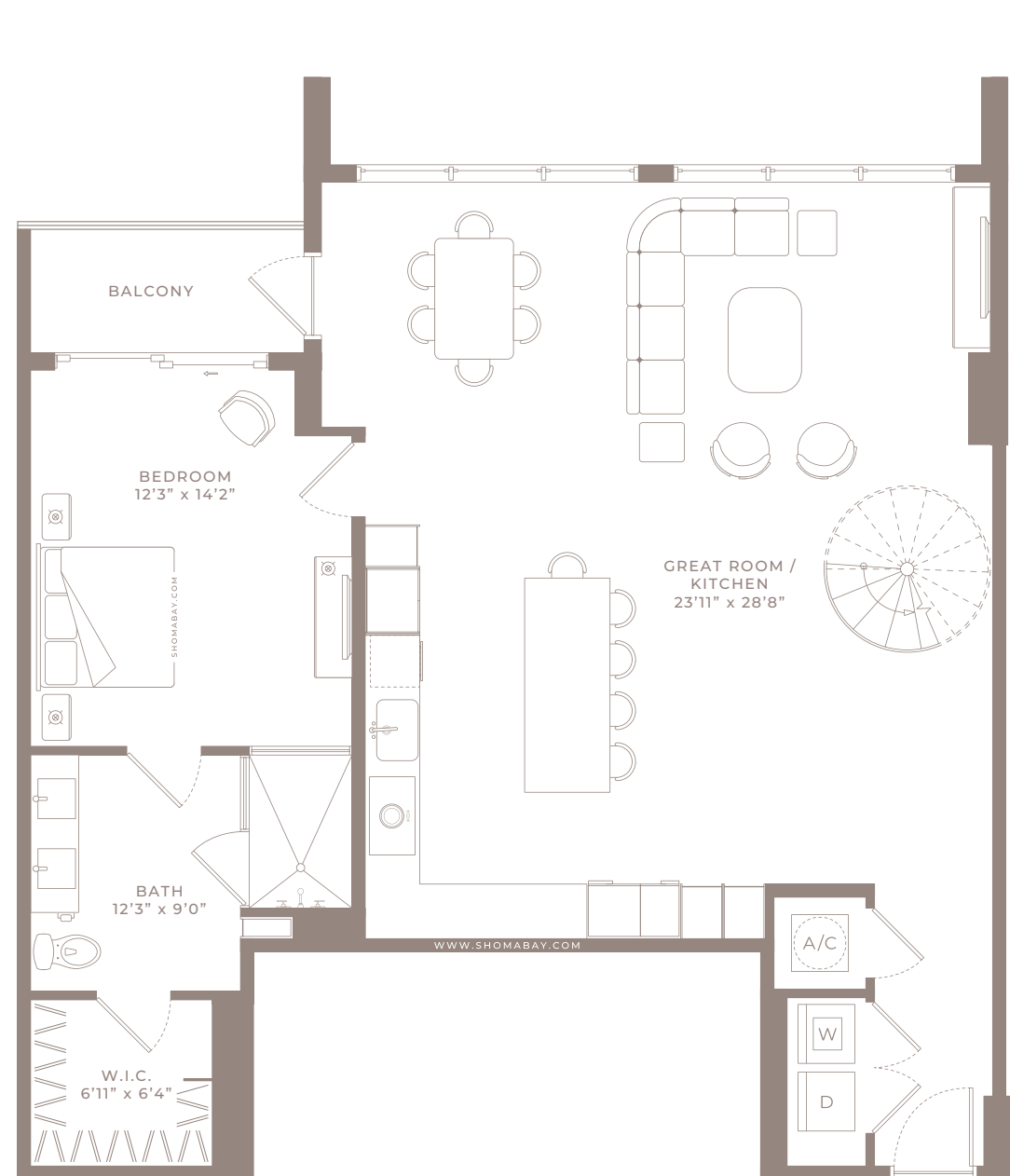
LEVEL 1



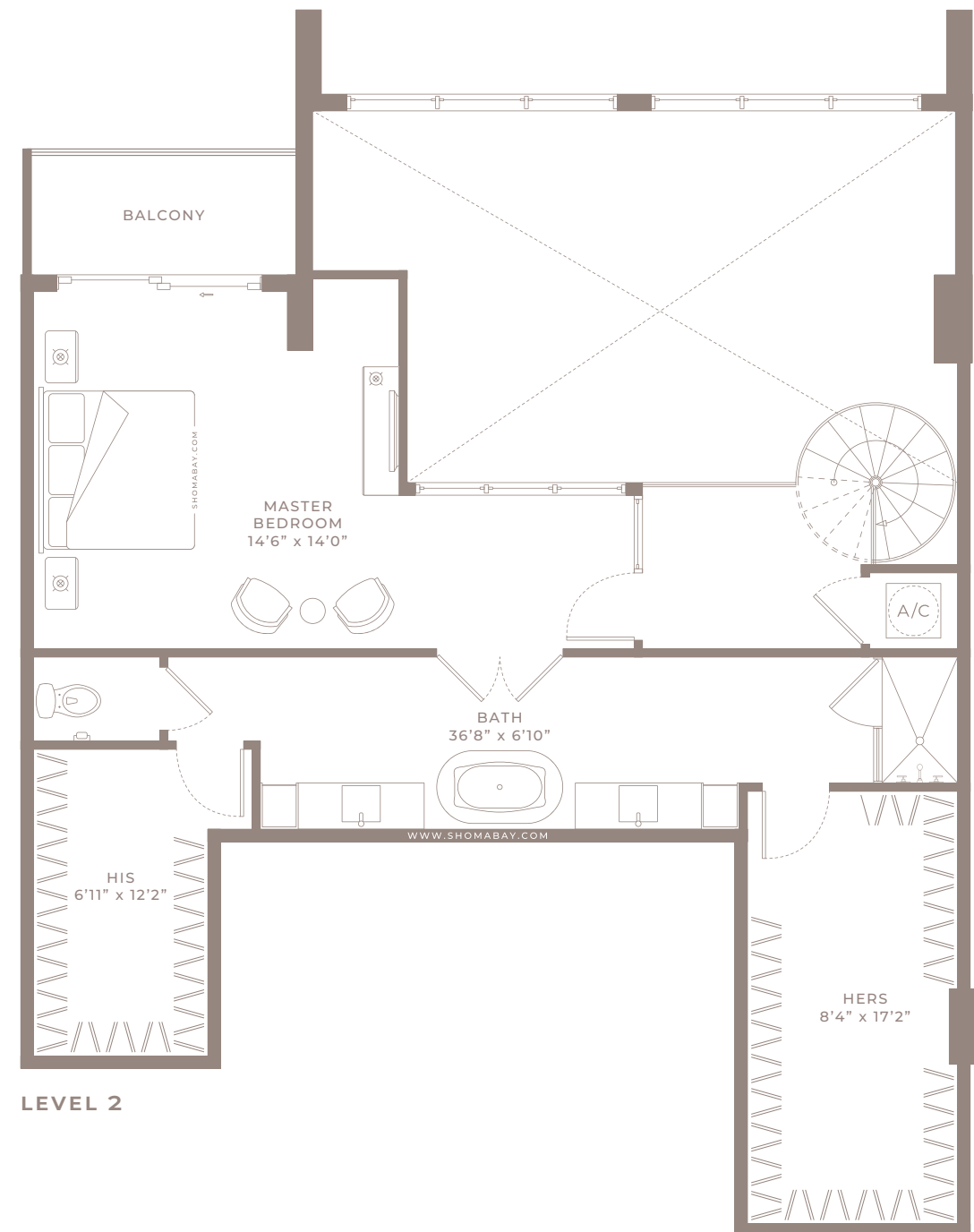
LEVEL 2

Any renderings and depictions are conceptual only and are for the convenience of reference. They should not be relied upon as representations, express or implied, of the final detail of the Units nor the views from any of the Units. ORAL REPRESENTATIONS CANNOT BE RELIED UPON AS CORRECTLY STATING REPRESENTATIONS OF THE DEVELOPER. FOR CORRECT REPRESENTATIONS, MAKE REFERENCE TO THIS BROCHURE AND TO THE DOCUMENTS REQUIRED BY 718.503, FLORIDA STATUTES, TO BE FURNISHED BY A DEVELOPER TO A BUYER OR LESSEE.





LEVEL 1



LEVEL 2



## MODEL P2 - Type PH (2BED/2BTH)

Level 27



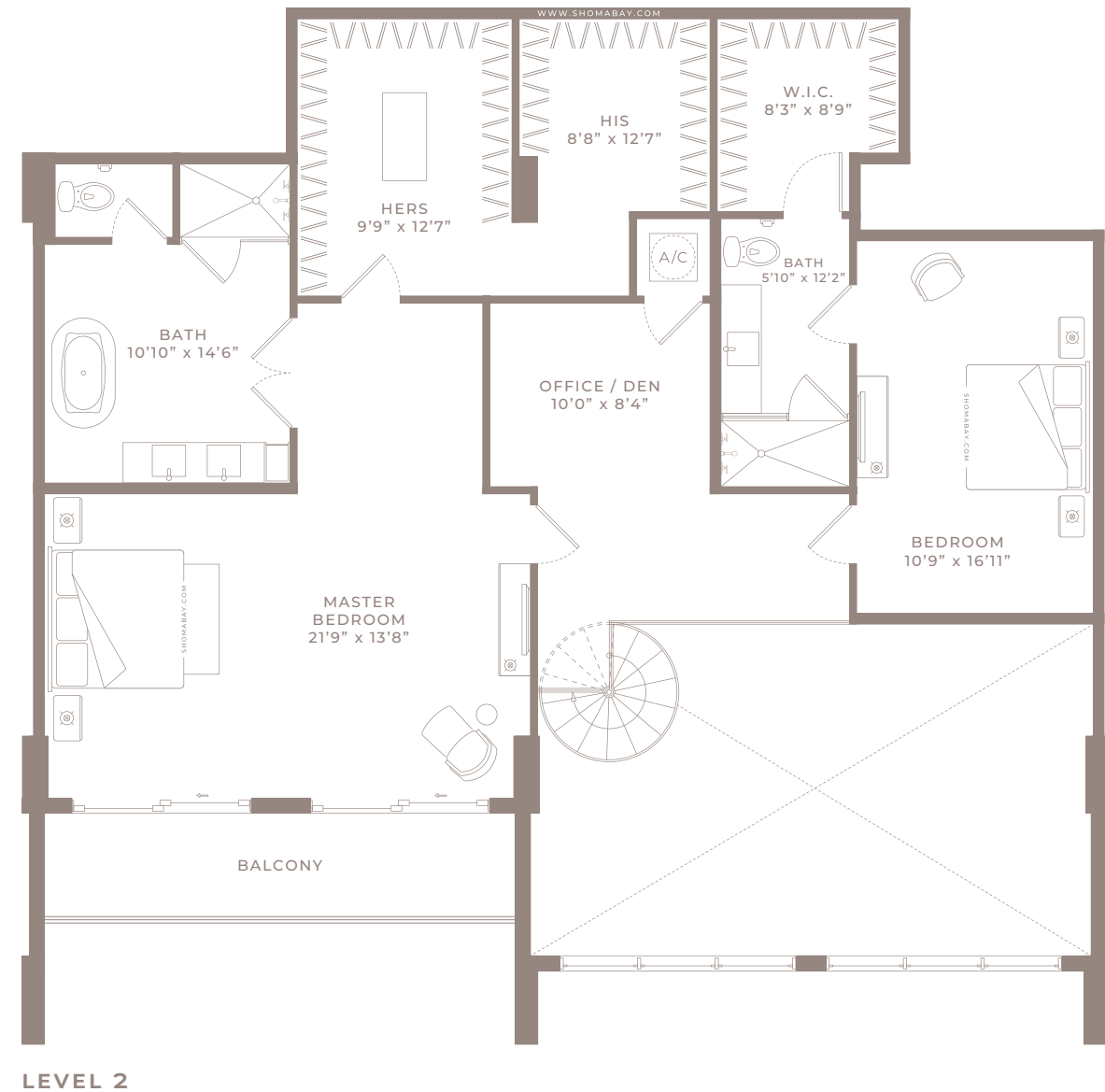
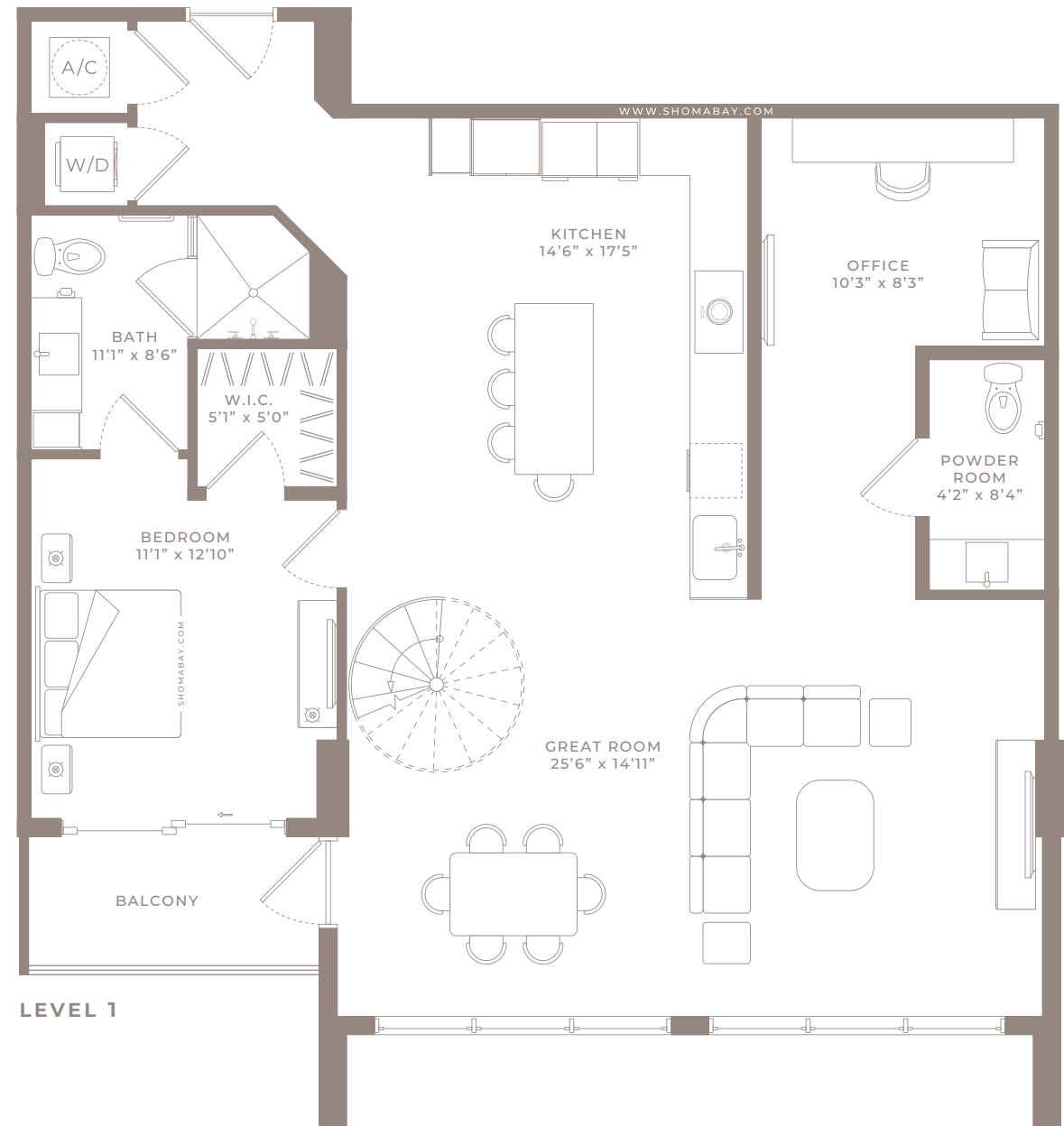
LEVEL 1



LEVEL 2

Internal Area	2,053 SQ.FT (190.7 m <sup>2</sup> )
Outdoor Area	106 SQ.FT (9.8 m <sup>2</sup> )
Total Area	2159 SQ.FT (201 m <sup>2</sup> )

Any renderings and depictions are conceptual only and are for the convenience of reference. They should not be relied upon as representations, express or implied, of the final detail of the Units nor the views from any of the Units. ORAL REPRESENTATIONS CANNOT BE RELIED UPON AS CORRECTLY STATING REPRESENTATIONS OF THE DEVELOPER. FOR CORRECT REPRESENTATIONS, MAKE REFERENCE TO THIS BROCHURE AND TO THE DOCUMENTS REQUIRED BY 718.503, FLORIDA STATUTES, TO BE FURNISHED BY A DEVELOPER TO A BUYER OR LESSEE.



**MODEL P3 - Type PH**  
(3BED/2 OFFICES/3.5BTH)  
Level 27



LEVEL 1



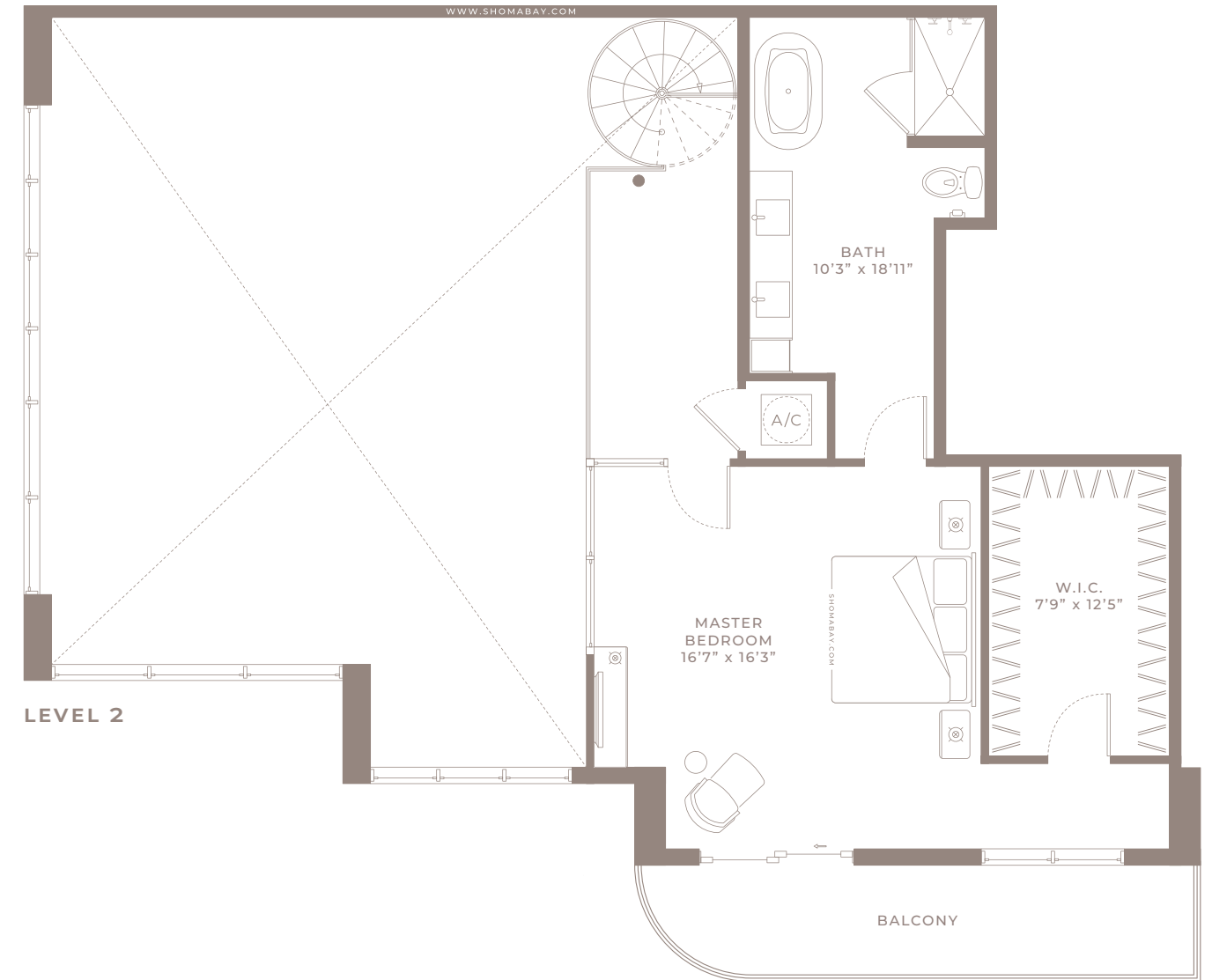
LEVEL 2

Internal Area	2,595 SQ.FT (241.1 m²)
Outdoor Area	160 SQ.FT (14.8 m²)
Total Area	2755 SQ.FT (256 m²)



Any renderings and depictions are conceptual only and are for the convenience of reference. They should not be relied upon as representations, express or implied, of the final detail of the Units nor the views from any of the Units. ORAL REPRESENTATIONS CANNOT BE RELIED UPON AS CORRECTLY STATING REPRESENTATIONS OF THE DEVELOPER. FOR CORRECT REPRESENTATIONS, MAKE REFERENCE TO THIS BROCHURE AND TO THE DOCUMENTS REQUIRED BY 718.503, FLORIDA STATUTES, TO BE FURNISHED BY A DEVELOPER TO A BUYER OR LESSEE.





**MODEL P4 - Type PH**  
(2BED/DEN/2.5BTH)  
Level 27



LEVEL 1



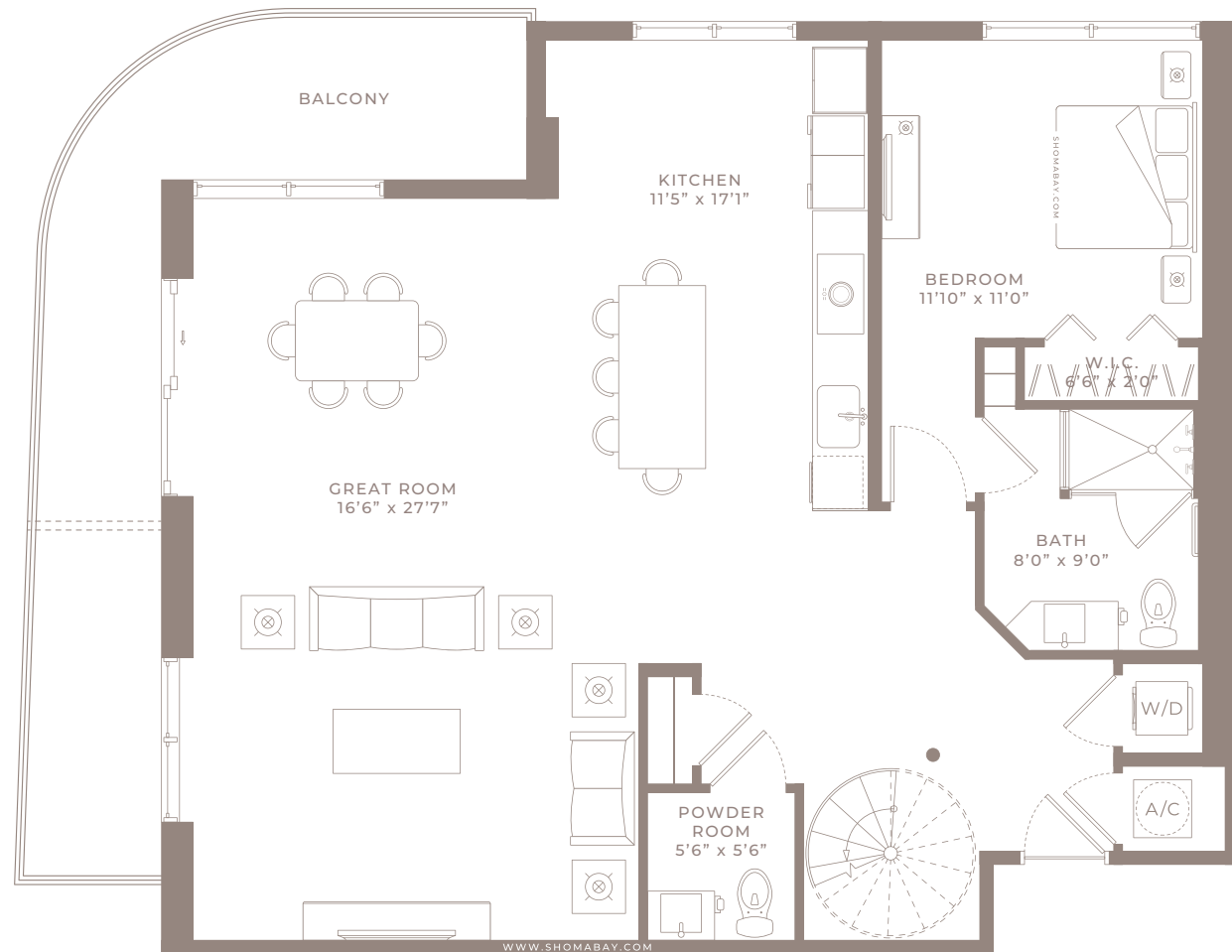
LEVEL 2

Internal Area	2,162 SQ.FT (200.8 m <sup>2</sup> )
Outdoor Area	299 SQ.FT (27.8 m <sup>2</sup> )
Total Area	2,461 SQ.FT (228.6 m <sup>2</sup> )

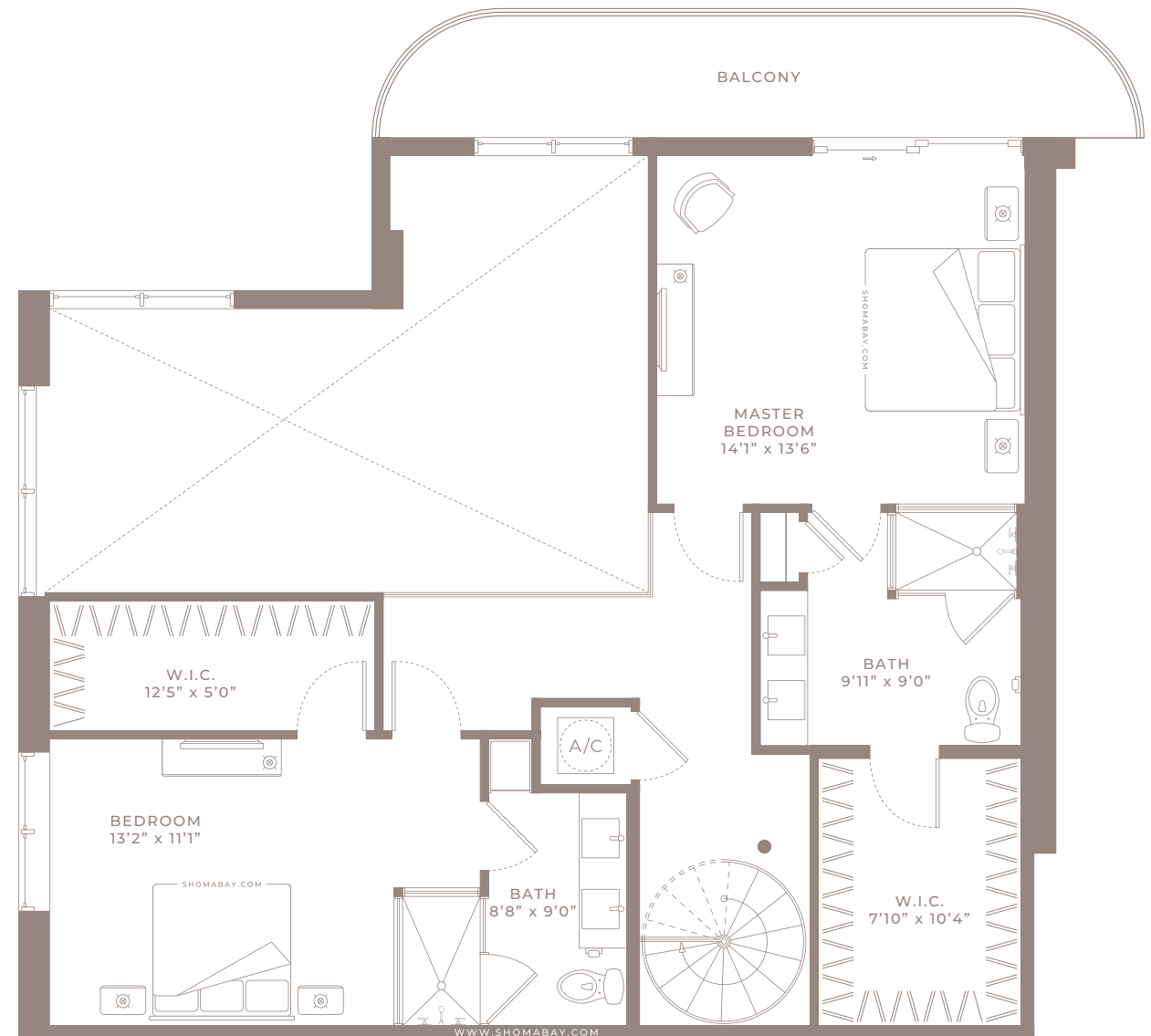


Any renderings and depictions are conceptual only and are for the convenience of reference. They should not be relied upon as representations, express or implied, of the final detail of the Units nor the views from any of the Units. ORAL REPRESENTATIONS CANNOT BE RELIED UPON AS CORRECTLY STATING REPRESENTATIONS OF THE DEVELOPER. FOR CORRECT REPRESENTATIONS, MAKE REFERENCE TO THIS BROCHURE AND TO THE DOCUMENTS REQUIRED BY 718.503, FLORIDA STATUTES, TO BE FURNISHED BY A DEVELOPER TO A BUYER OR LESSEE.





LEVEL 1



LEVEL 2

## MODEL P5 - Type PH (3BED/3.5BTH)

Level 27



LEVEL 1



LEVEL 2

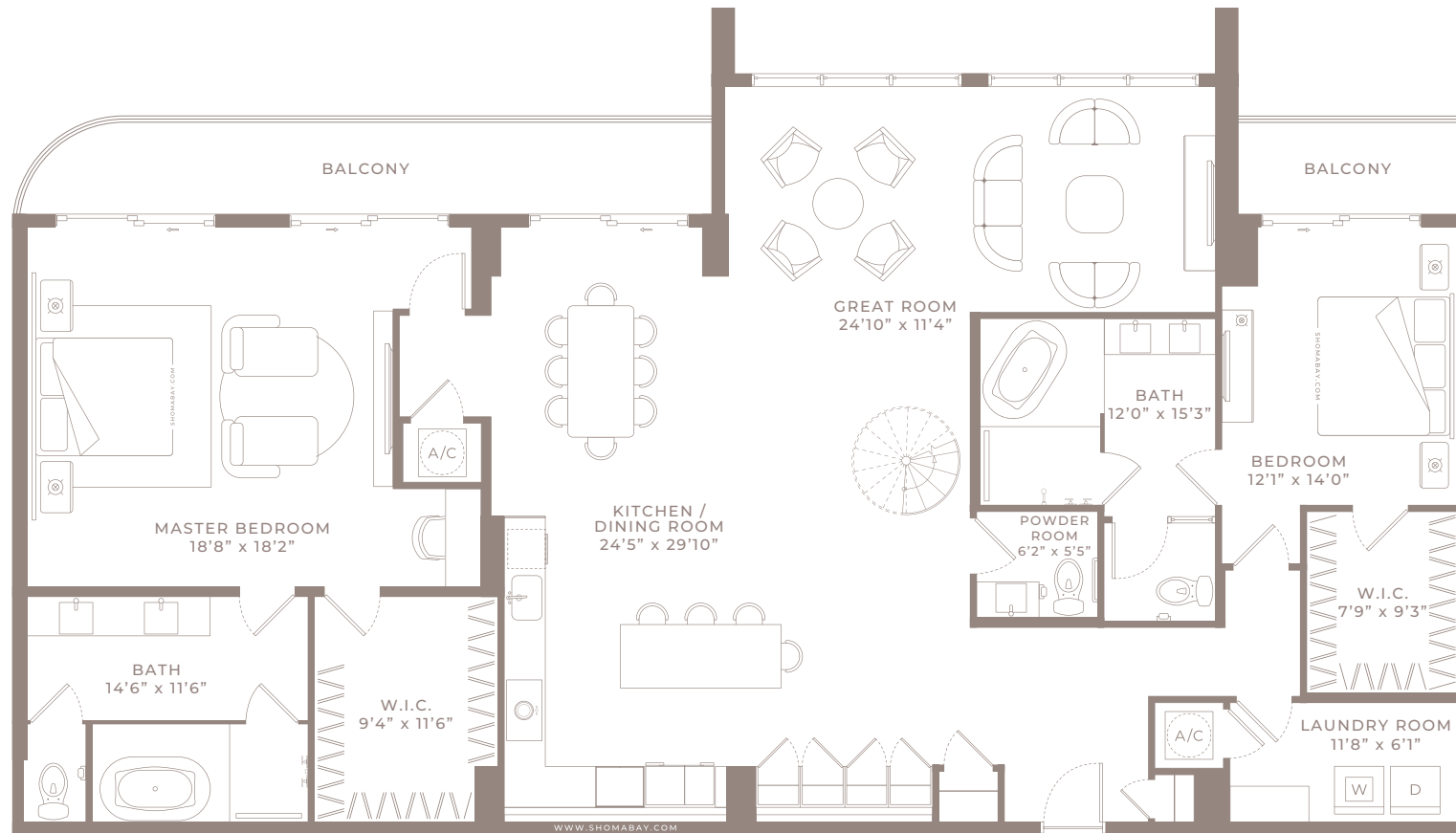
Internal Area	2,155 SQ.FT (200.2 m <sup>2</sup> )
Outdoor Area	374 SQ.FT (34.7 m <sup>2</sup> )
Total Area	2,529 SQ.FT (235 m <sup>2</sup> )



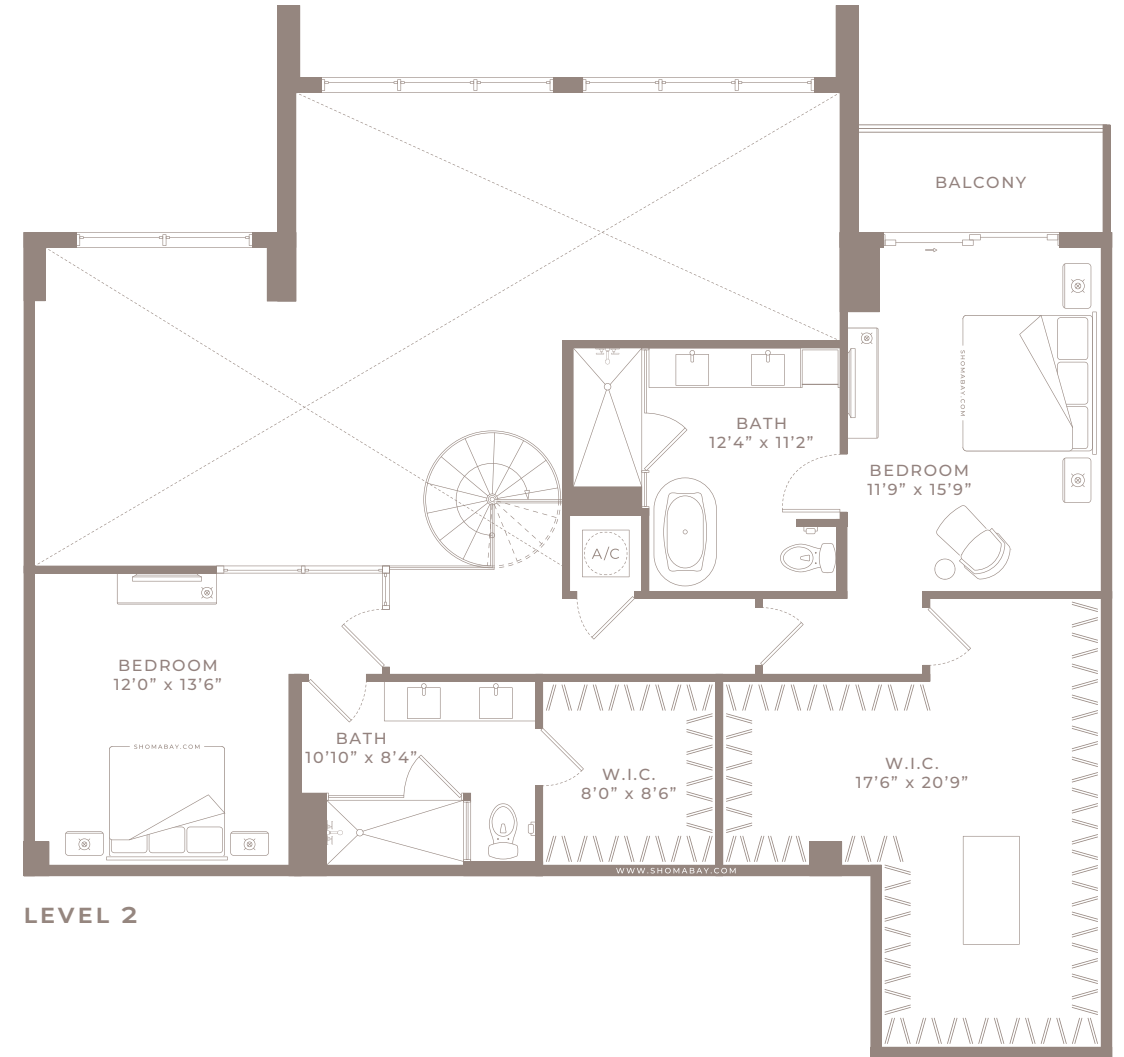
Any renderings and depictions are conceptual only and are for the convenience of reference. They should not be relied upon as representations, express or implied, of the final detail of the Units nor the views from any of the Units. ORAL REPRESENTATIONS CANNOT BE RELIED UPON AS CORRECTLY STATING REPRESENTATIONS OF THE DEVELOPER. FOR CORRECT REPRESENTATIONS, MAKE REFERENCE TO THIS BROCHURE AND TO THE DOCUMENTS REQUIRED BY 718.503, FLORIDA STATUTES, TO BE FURNISHED BY A DEVELOPER TO A BUYER OR LESSEE.







LEVEL 1



LEVEL 2

**MODEL P6 - Type PH**  
(4BED/4.5BTH)  
Level 27

Internal Area	3,645 SQ.FT (338.6 m²)
Outdoor Area	292 SQ.FT (27.1 m²)
Total Area	3937 SQ.FT (366 m²)



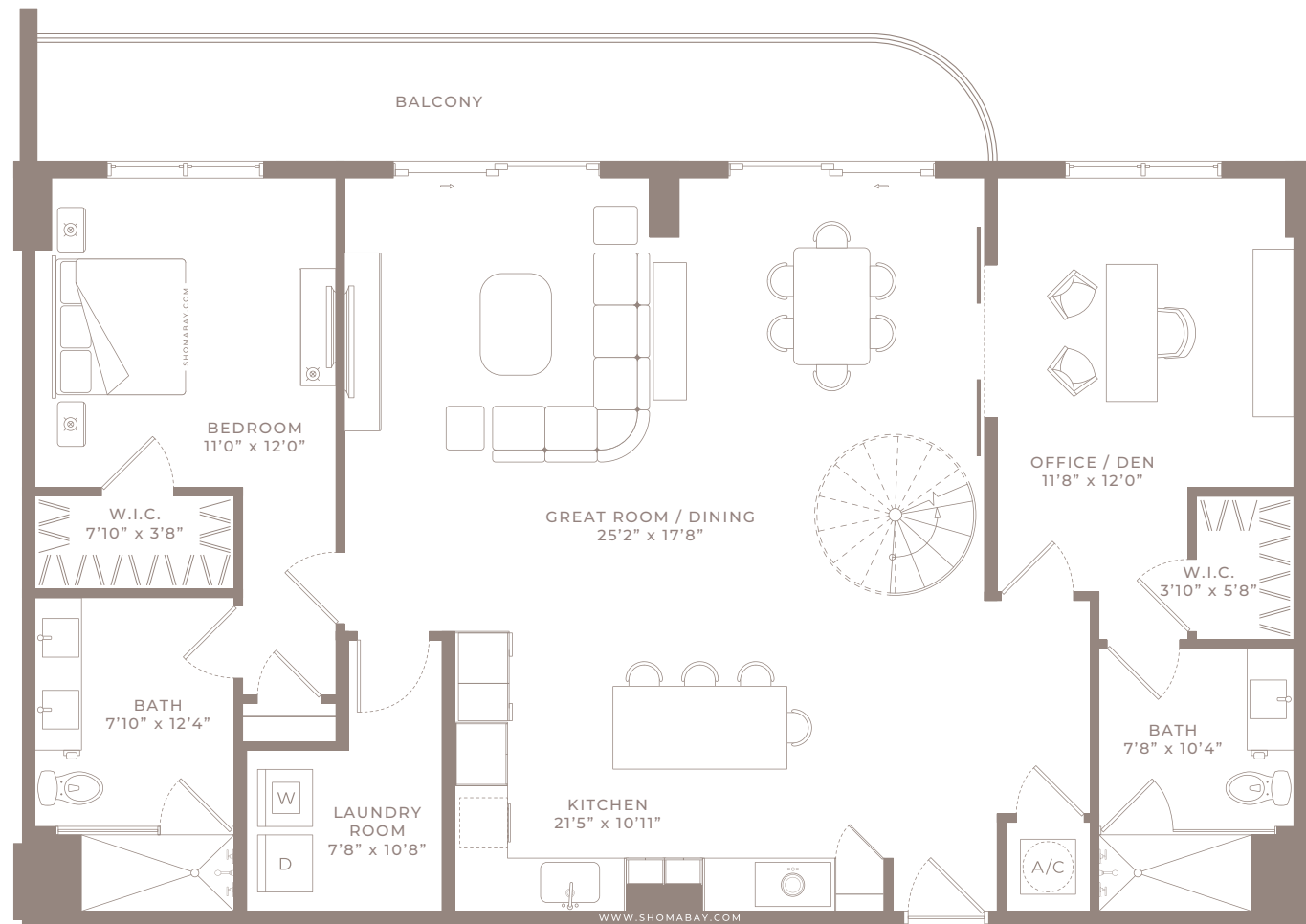
LEVEL 1



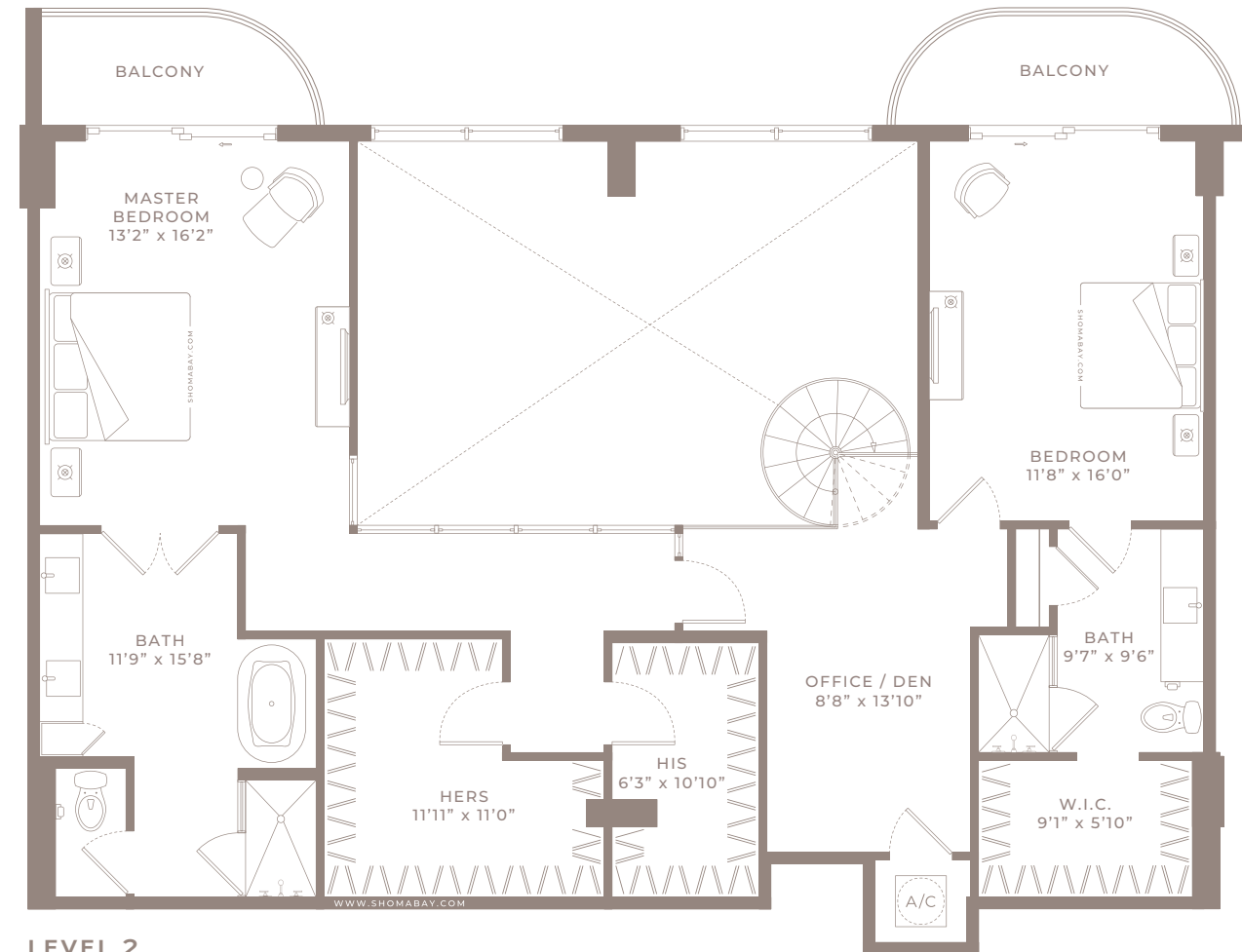
LEVEL 2

Any renderings and depictions are conceptual only and are for the convenience of reference. They should not be relied upon as representations, express or implied, of the final detail of the Units nor the views from any of the Units. ORAL REPRESENTATIONS CANNOT BE RELIED UPON AS CORRECTLY STATING REPRESENTATIONS OF THE DEVELOPER. FOR CORRECT REPRESENTATIONS, MAKE REFERENCE TO THIS BROCHURE AND TO THE DOCUMENTS REQUIRED BY 718.503, FLORIDA STATUTES, TO BE FURNISHED BY A DEVELOPER TO A BUYER OR LESSEE.





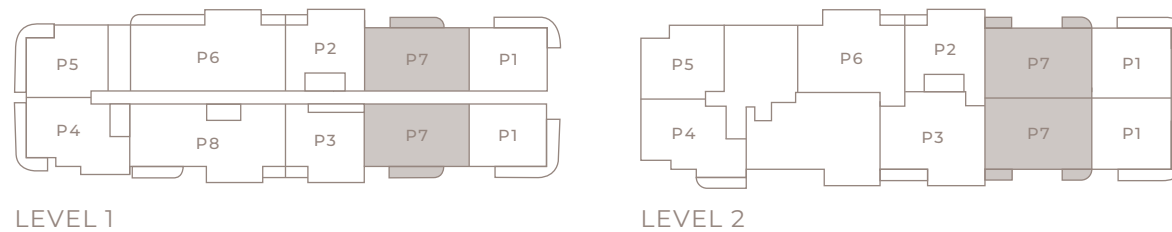
LEVEL 1



LEVEL 2

## MODEL P7 - Type PH (3BED/DEN/OFFICE/4BTH)

Level 27



LEVEL 1

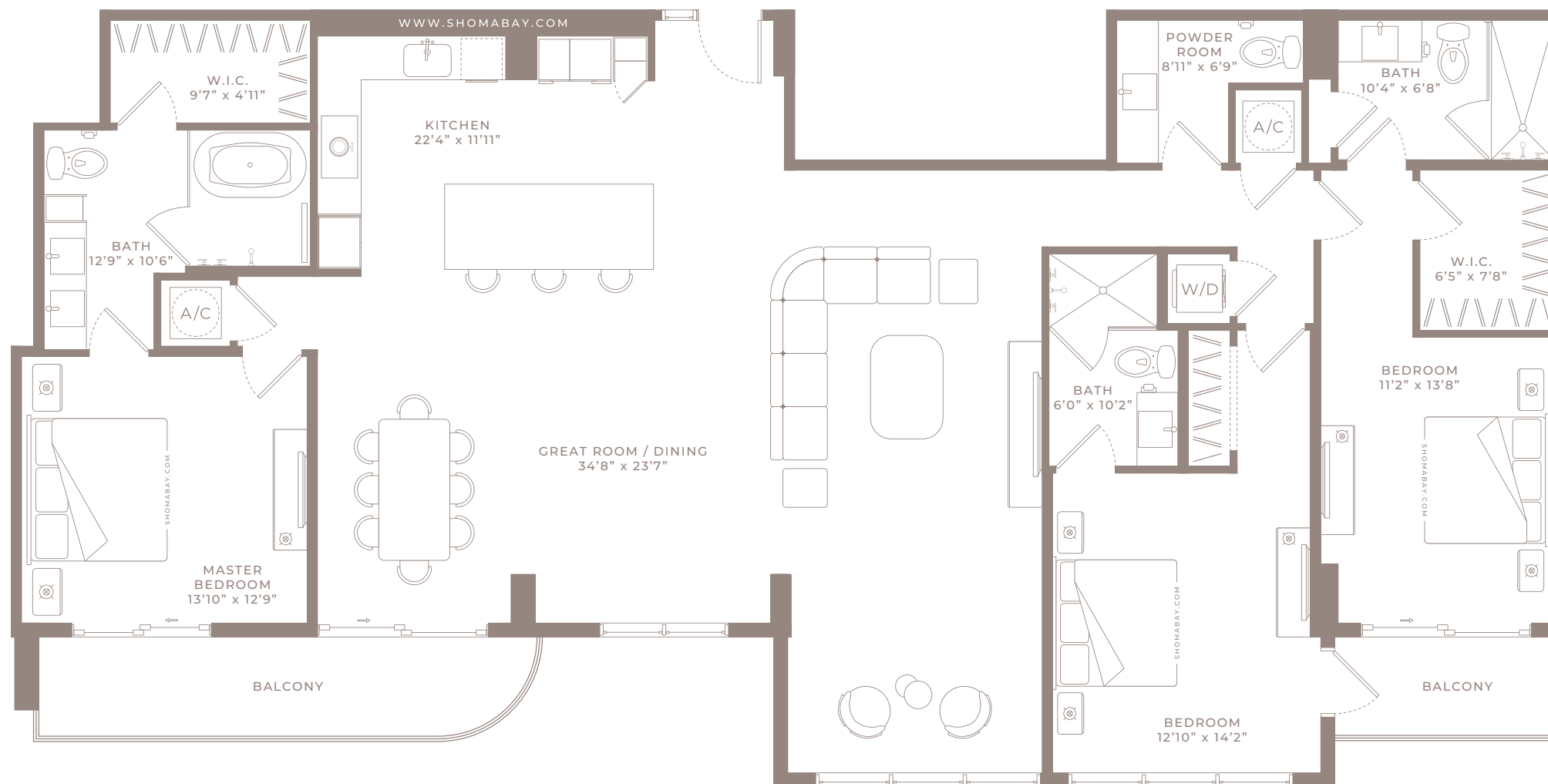
LEVEL 2

Internal Area	2,760 SQ.FT (256.4 m <sup>2</sup> )
Outdoor Area	302 SQ.FT (28 m <sup>2</sup> )
Total Area	3,062 SQ.FT (284 m <sup>2</sup> )

SHOMA  
bay

Any renderings and depictions are conceptual only and are for the convenience of reference. They should not be relied upon as representations, express or implied, of the final detail of the Units nor the views from any of the Units. ORAL REPRESENTATIONS CANNOT BE RELIED UPON AS CORRECTLY STATING REPRESENTATIONS OF THE DEVELOPER. FOR CORRECT REPRESENTATIONS, MAKE REFERENCE TO THIS BROCHURE AND TO THE DOCUMENTS REQUIRED BY 718.503, FLORIDA STATUTES, TO BE FURNISHED BY A DEVELOPER TO A BUYER OR LESSEE.





## MODEL P8 - Type PH (3BED/3.5BTH)

Level 27



Internal Area	2,267 SQ.FT (210.6 m <sup>2</sup> )
Outdoor Area	169 SQ.FT (15.7 m <sup>2</sup> )
Total Area	2436 SQ.FT (226 m <sup>2</sup> )

SHOMA  
bay

Any renderings and depictions are conceptual only and are for the convenience of reference. They should not be relied upon as representations, express or implied, of the final detail of the Units nor the views from any of the Units. ORAL REPRESENTATIONS CANNOT BE RELIED UPON AS CORRECTLY STATING REPRESENTATIONS OF THE DEVELOPER. FOR CORRECT REPRESENTATIONS, MAKE REFERENCE TO THIS BROCHURE AND TO THE DOCUMENTS REQUIRED BY 718.503, FLORIDA STATUTES, TO BE FURNISHED BY A DEVELOPER TO A BUYER OR LESSEE.



SHOMA

CO8MO  
Reportage.

SHOMABAY.COM